

10-A. Title VI and Environmental Justice

Title VI

Title VI of the Civil Rights Act of 1964 is a statute that protects individuals from discrimination based on race, color, and national origin in programs and activities receiving federal financial assistance. Compliance with provisions of Title VI extend to all transportation investments and planning processes. Title VI compliance needs to be considered in metropolitan and statewide planning.

To determine potential impacts of transportation projects, the GHMPO used 2016 Census data to identify Title VI communities across the four county region. By mapping Title IV populations, the GHMPO can identify areas that may experience, or currently are experiencing, disproportionately adverse or negative effects caused by transportation projects. These maps also help identify where the GHMPO should conduct public outreach efforts. Maps 10-1 through 10-16 show Title VI populations by concentration (density) using data provided by the U.S. Census.

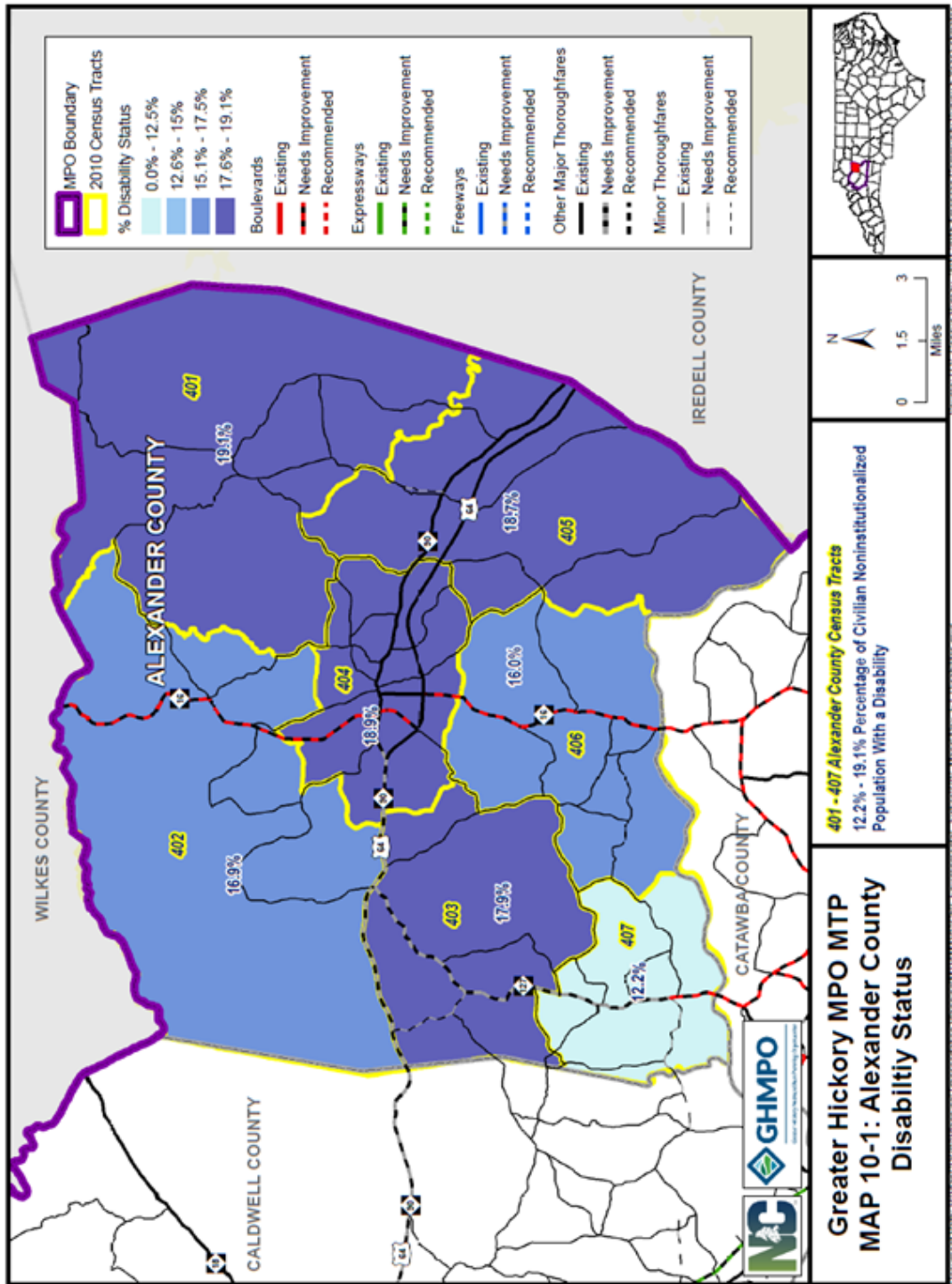
From these maps, transportation planners and the general public can clearly understand which populations are impacted by existing and planned transportation projects. Data from each map can also be used by impacted or potentially impacted communities during public meetings, planning workshops, and throughout the plan development process.

For maps 10-1 through 10-4, “Disability Status” includes individuals with physical or mental impairments that substantially limits one or more major life activity.

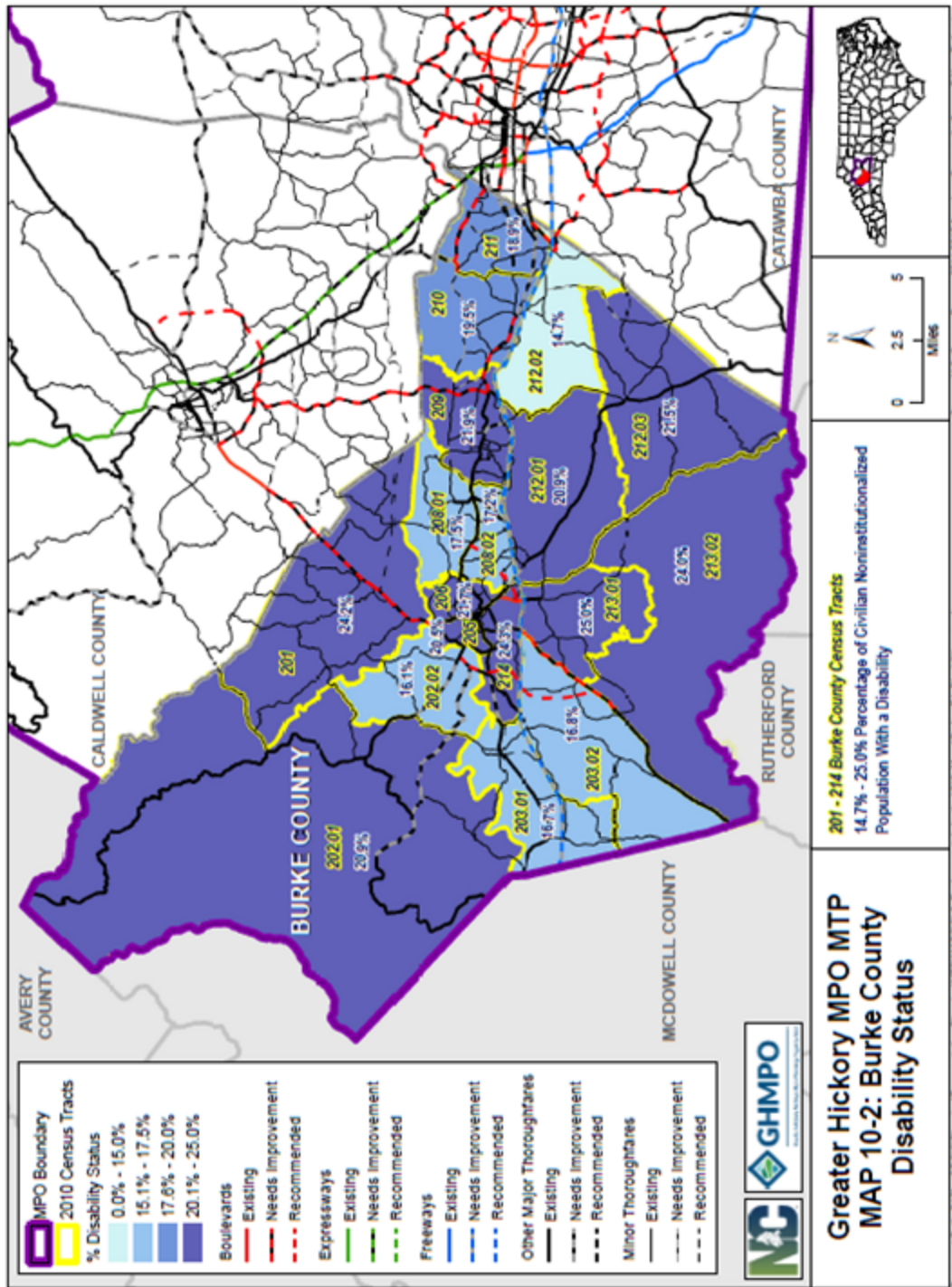
For maps 10-5 through 10-8, “Vehicle Availability” refers to the percentage of households without access to a vehicle.

For maps 10-9 through 10-12, “Limited English Proficiency” includes individuals who are not fluent in the English language.

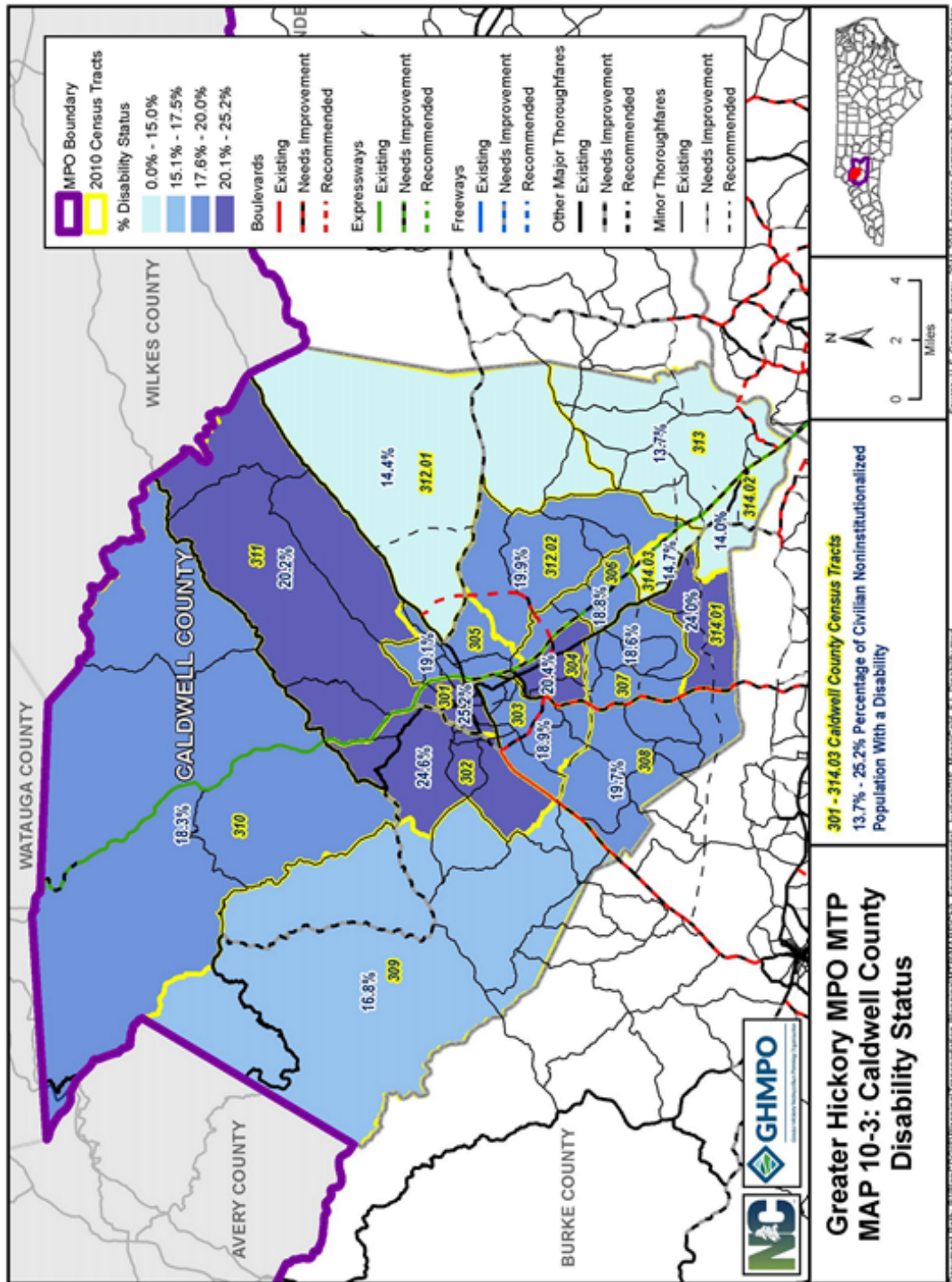
For maps 10-13 through 10-16, “Persons Over 65” includes individuals aged 65 years and older.



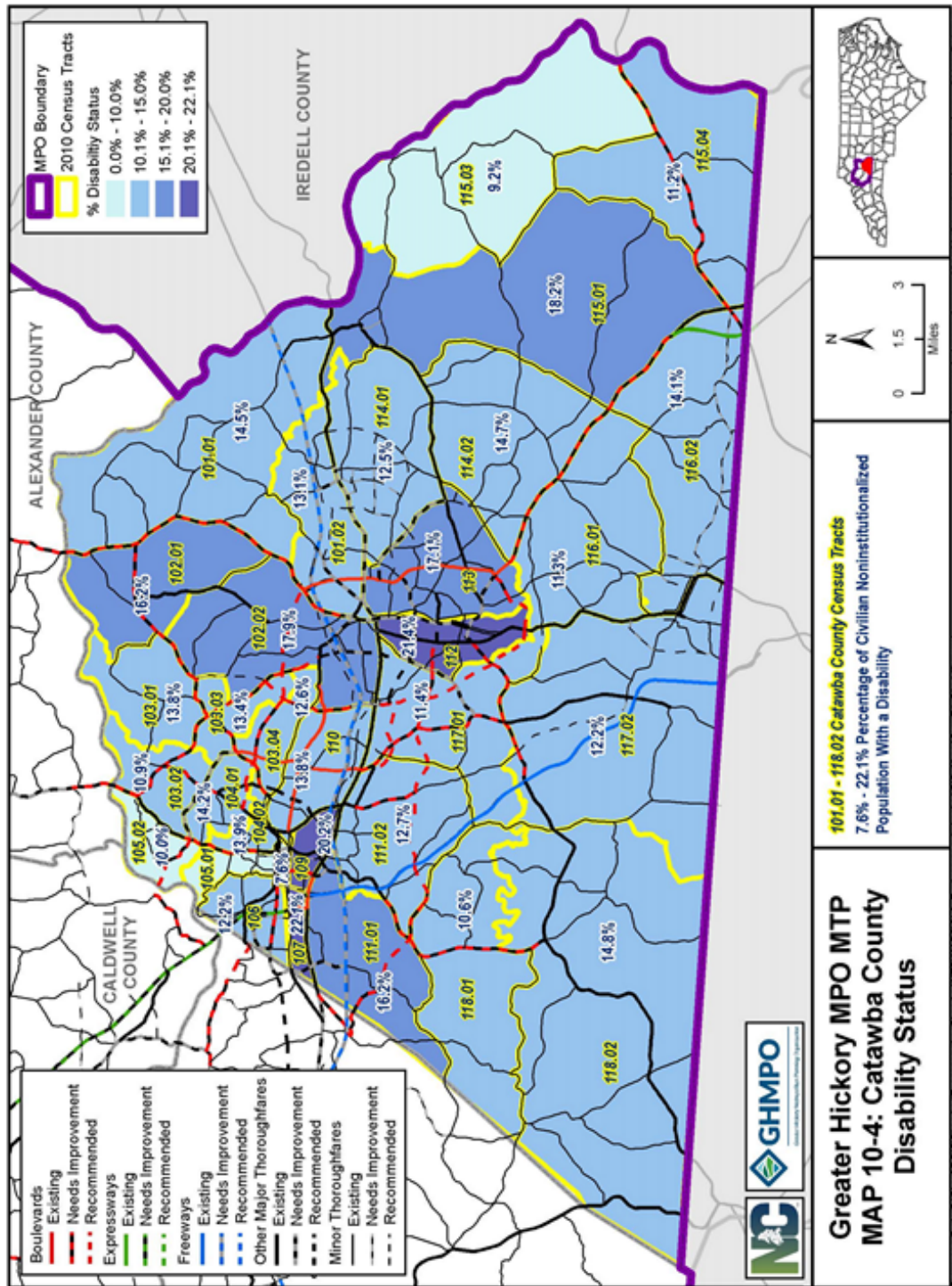
Data from the U.S. Census Bureau show that the highest percentages of Alexander County's disabled individuals were located in Census Tracts 401, 403, 404 and 405. The percentage of individuals with a disability in those Tracts ranged from 17.6% to 19.1%. At 12.2%, Tract 407 had the lowest percentage of disabled individuals in the County.



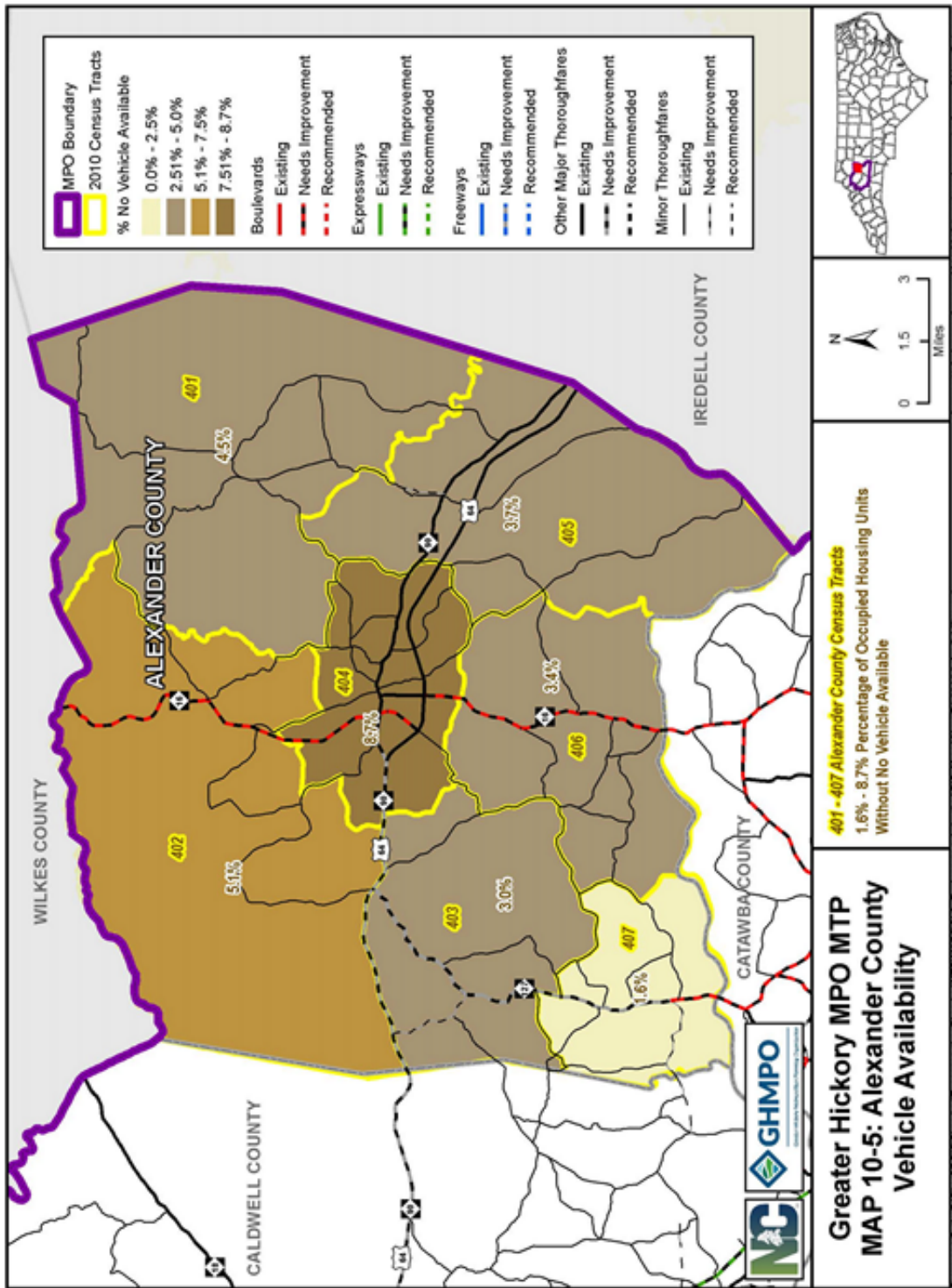
Data from the U.S. Census Bureau show that the highest percentages of Burke County’s disabled individuals were located in Census Tracts 201, 202.01, 205, 206, 209, 212.01, 212.03, 213.01, 213.02, and 214. The percentage of individuals with a disability in those Tracts ranged from 20.1% to 25.0%. At 14.7%, Tract 212.02 had the lowest percentage of disabled individuals in the County.



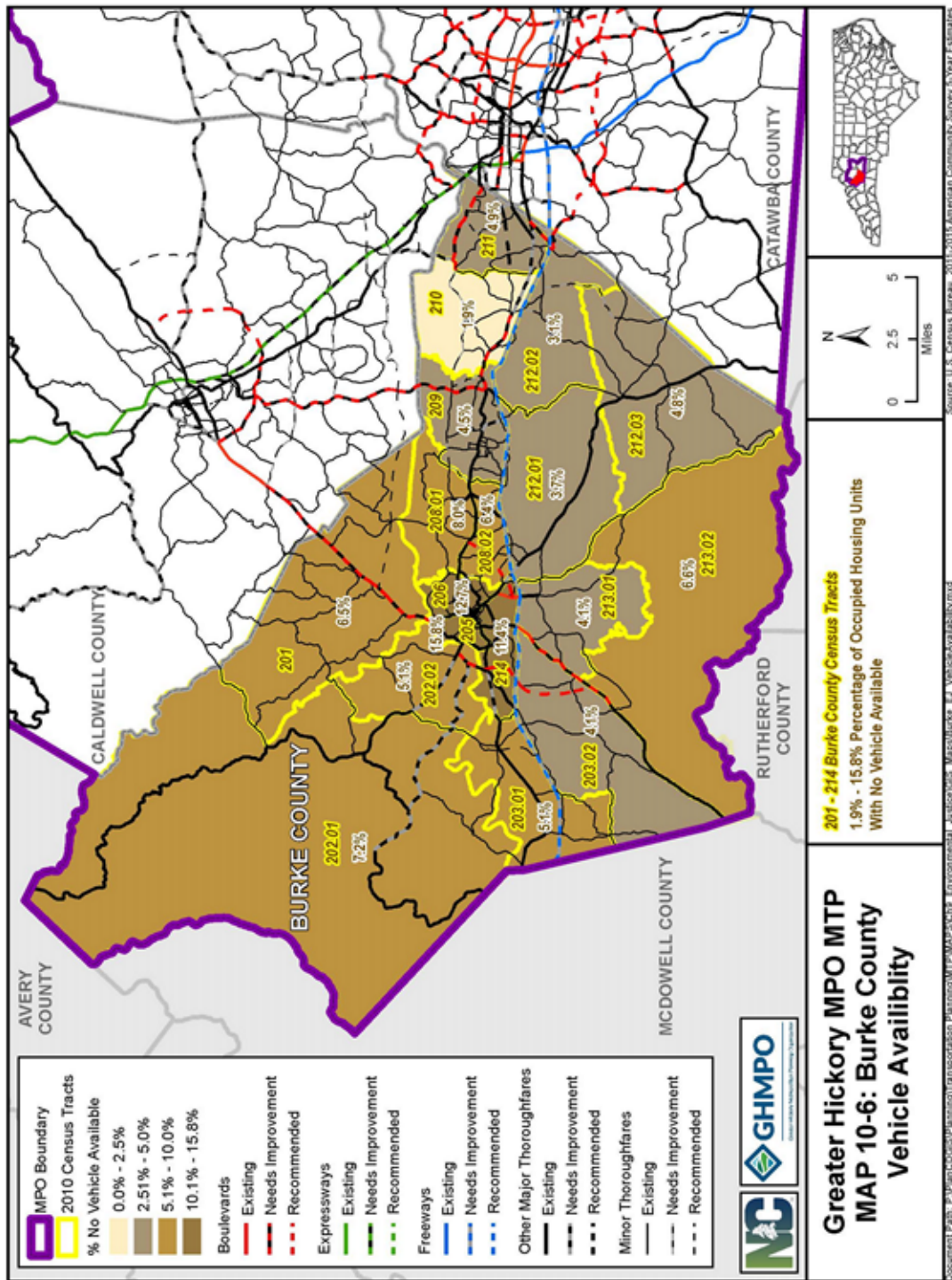
Data from the U.S. Census Bureau show that the highest percentages of Caldwell County’s disabled individuals were located in Census Tracts 301, 302, 304, 311, and 314.01. The percentage of individuals with a disability in those Tracts ranged from 20.1% to 25.2%. At 13.7%, Tract 313 had the lowest percentage of disabled individuals in the County.



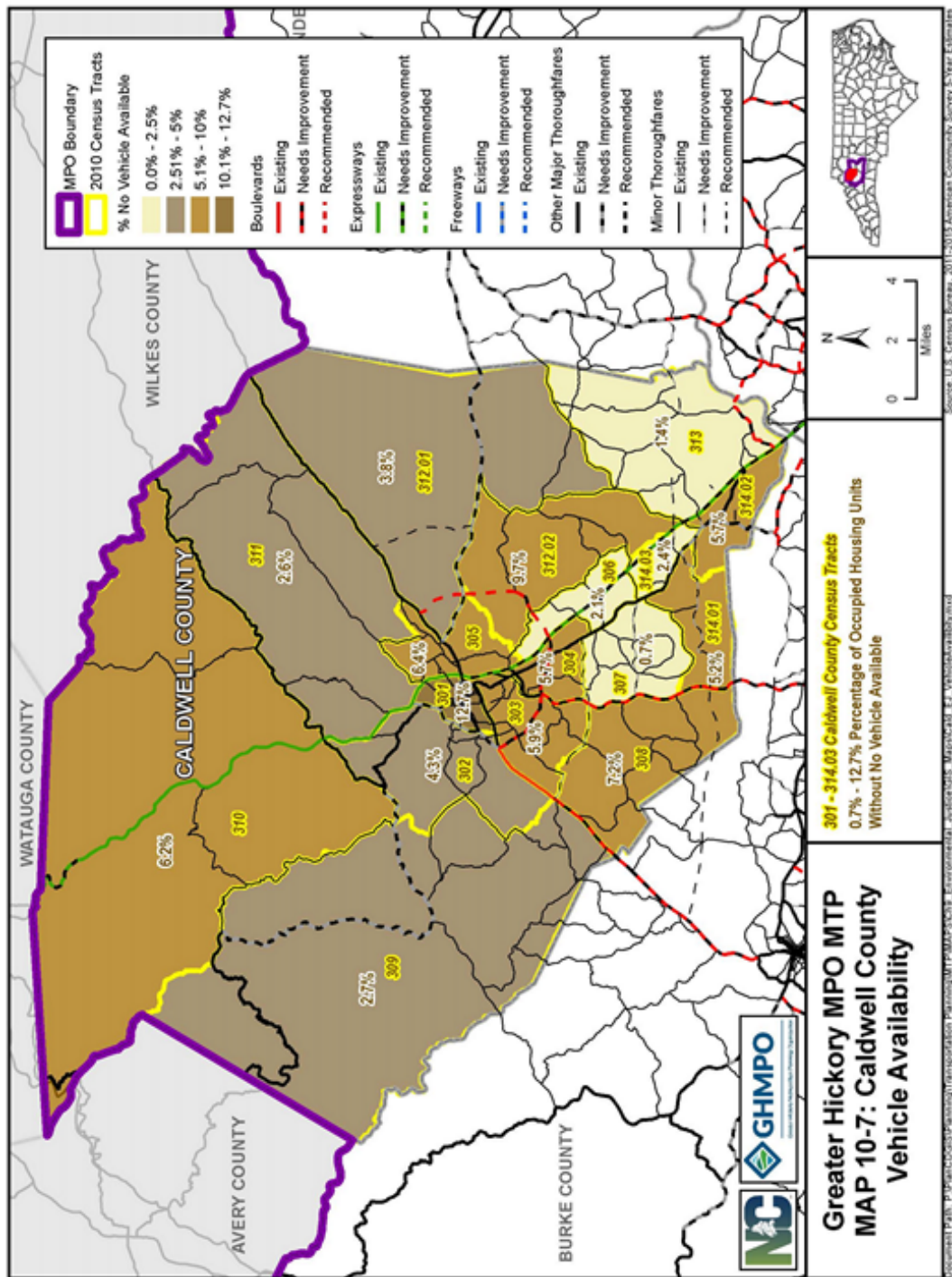
Data from the U.S. Census Bureau show that the highest percentages of Catawba County's disabled individuals were located in Census Tracts 107, 109, and 112. The percentage of individuals with a disability in those Tracts ranged from 20.1% to 22.1%. At 7.6%, Tract 105.01 had the lowest percentage of disabled individuals in the County.



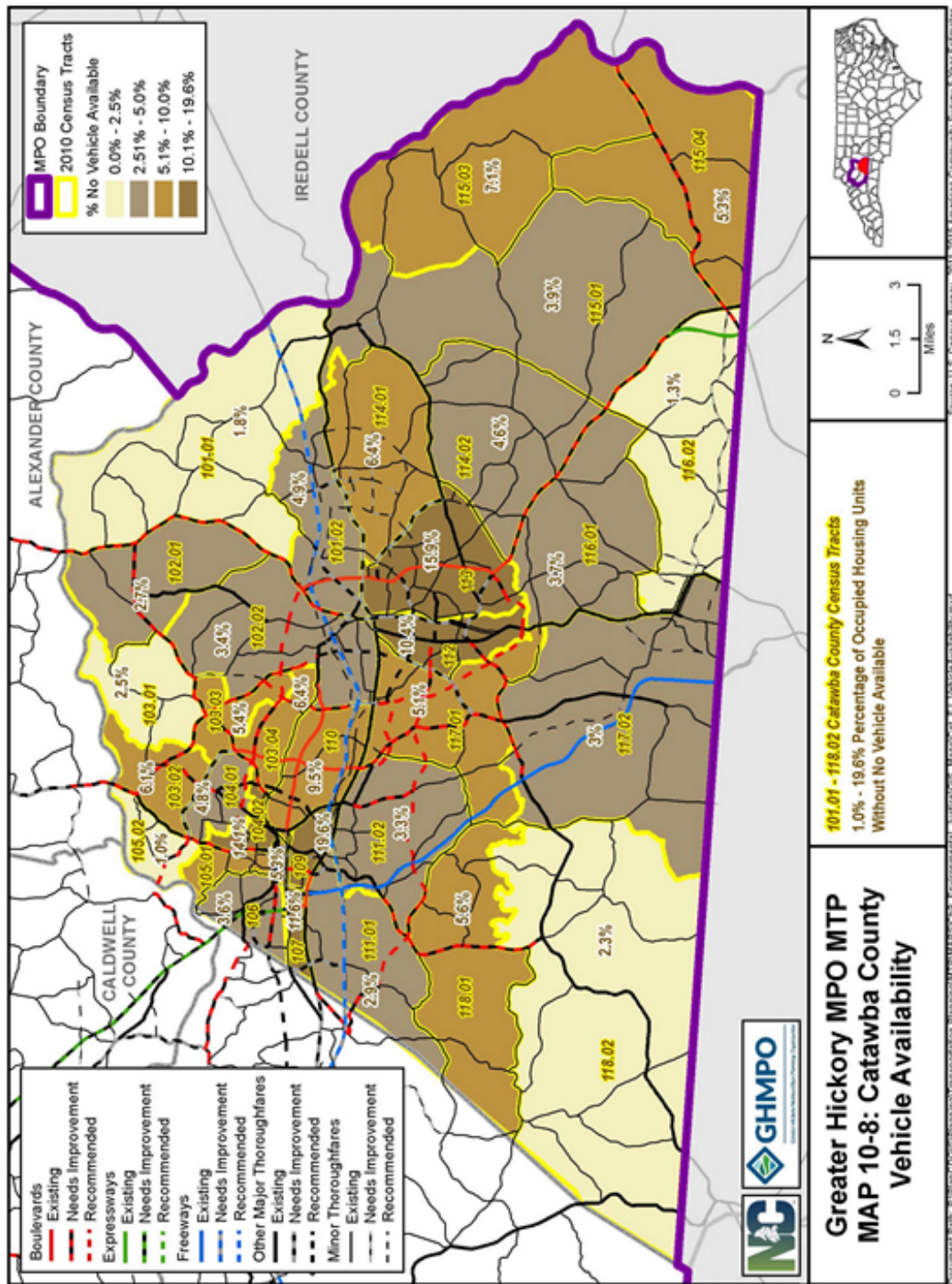
Data from the U.S. Census Bureau show that the most concentrated area in Alexander County without vehicle availability was in Census Tract 404 and encompassed 8.7% of the overall Tract population. Tract 407 had the lowest concentration of no vehicle availability at 1.6%.



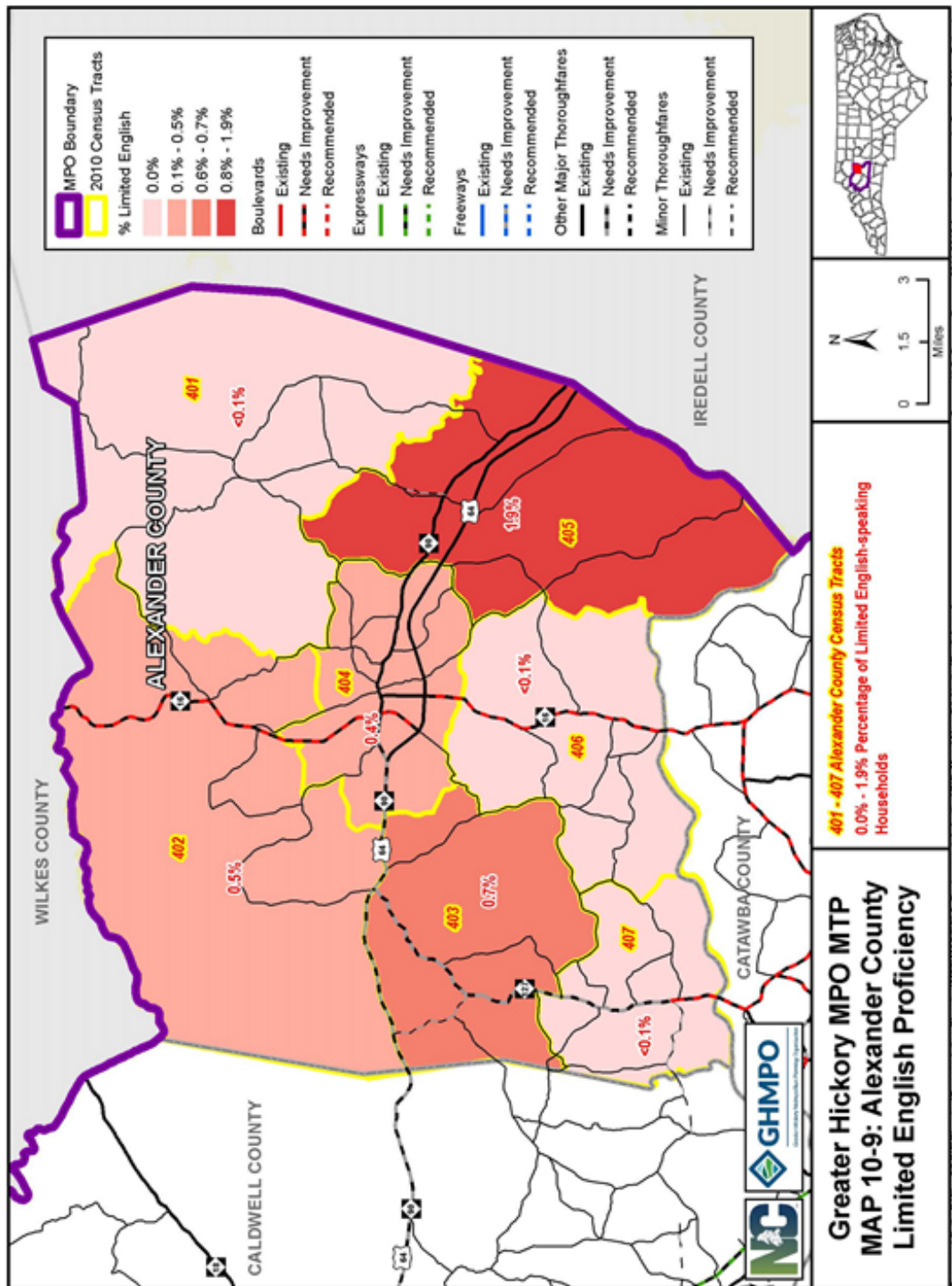
Data from the U.S. Census Bureau show that the most concentrated areas in Burke County without vehicle availability were in census tracts 205, 206, and 214 and encompassed between 10.1% and 15.8% of the overall census tract population. Tract 210 had the lowest concentration of no vehicle availability at 1.9%.



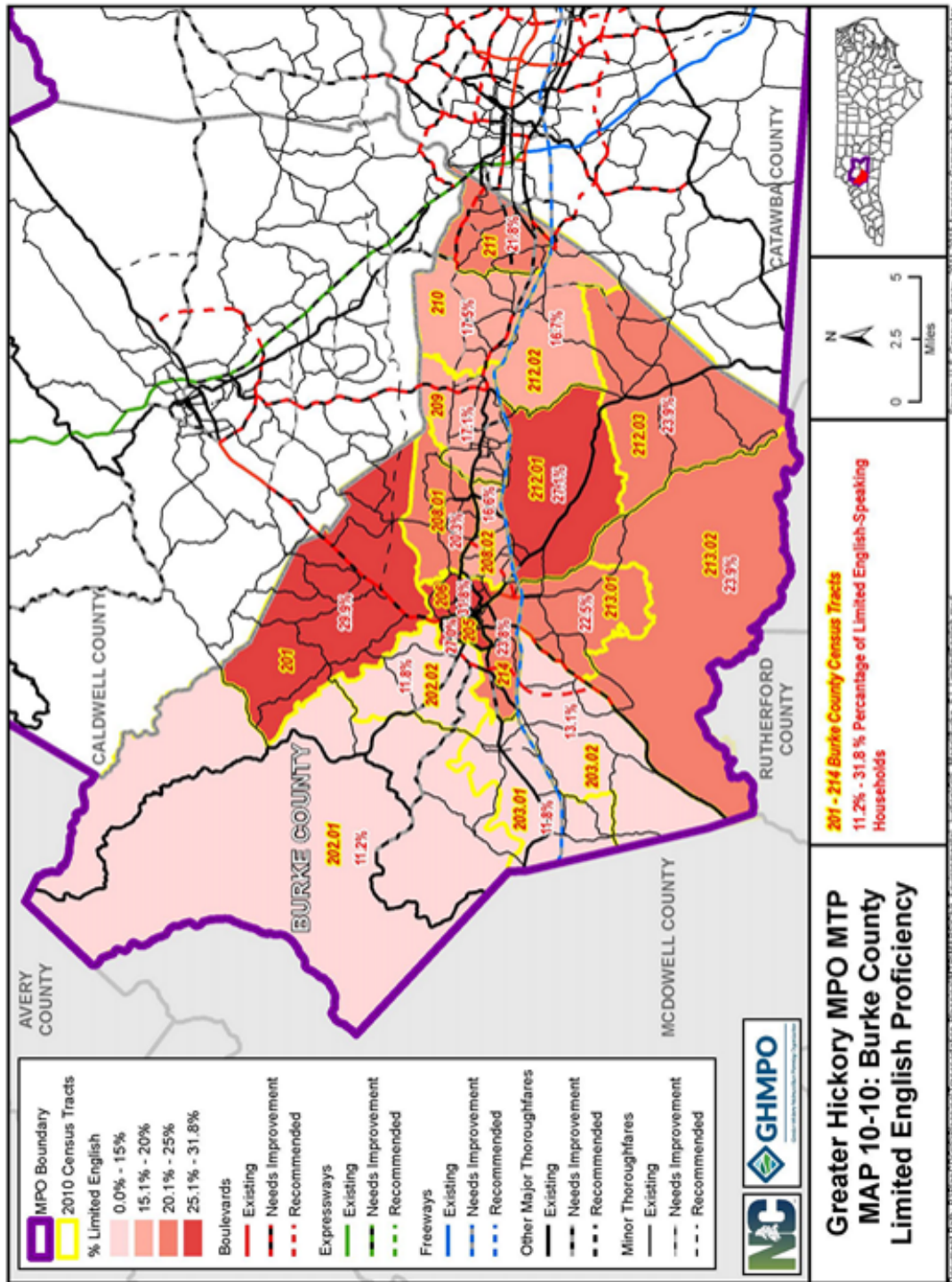
Data from the U.S. Census Bureau show the most concentrated area in Caldwell County without vehicle availability was in Census Tract 301 and encompassed 12.7% of the overall Tract population. It should also be noted that census tract 312.02 covers a large southern portion of the county and carless households encompassed 9.7% of the overall census tract population. Tract 307 had the lowest concentration of no vehicle availability at 0.7%.



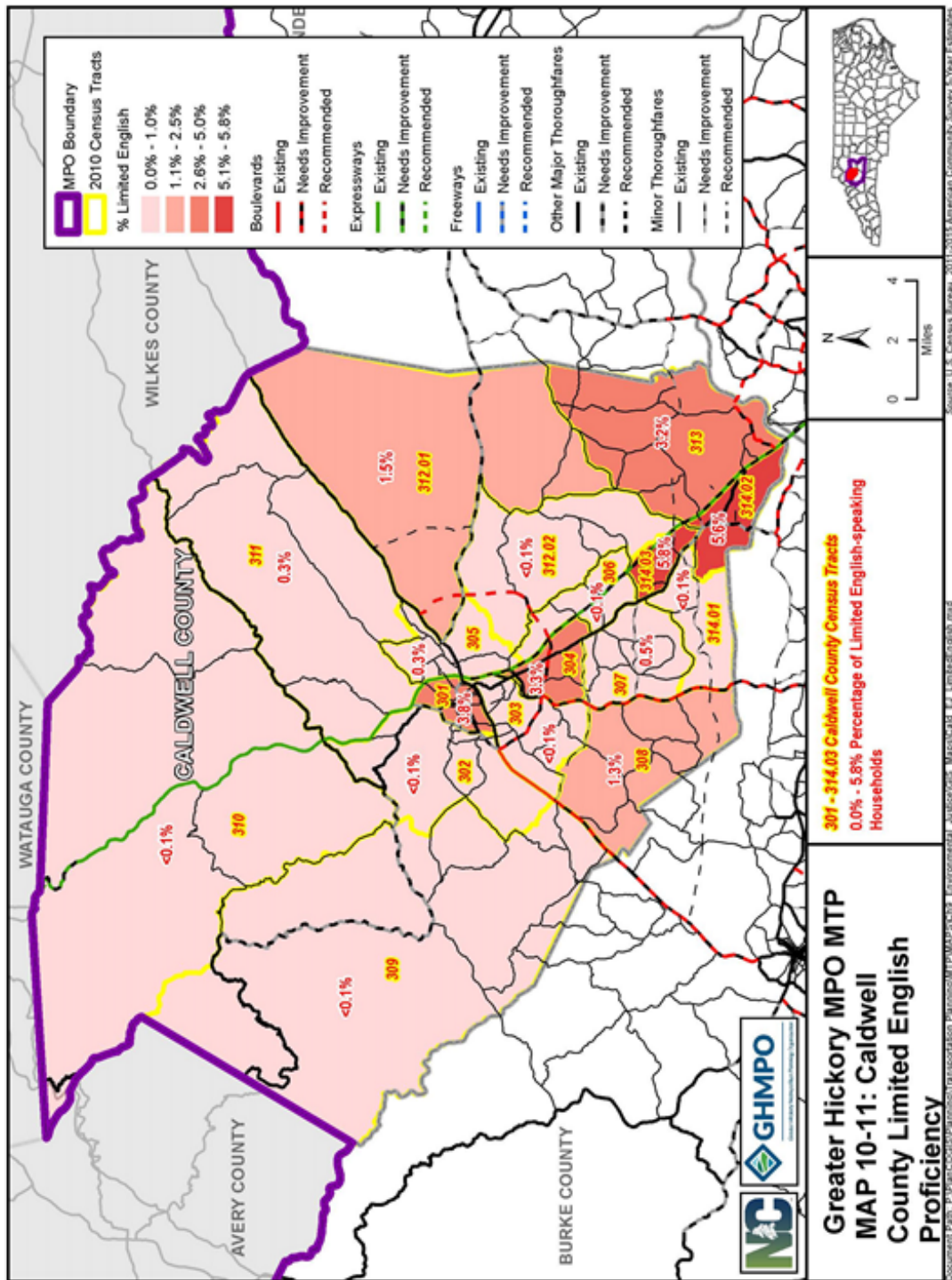
Data from the U.S. Census Bureau show the most concentrated areas in Catawba County without vehicle availability were in Census Tracts 104.02, 107, 109, 112, and 113 and encompassed between 10.1% and 19.6% of the overall Tract population. Tract 105.02 had the lowest concentration of no vehicle availability at 1.0%.



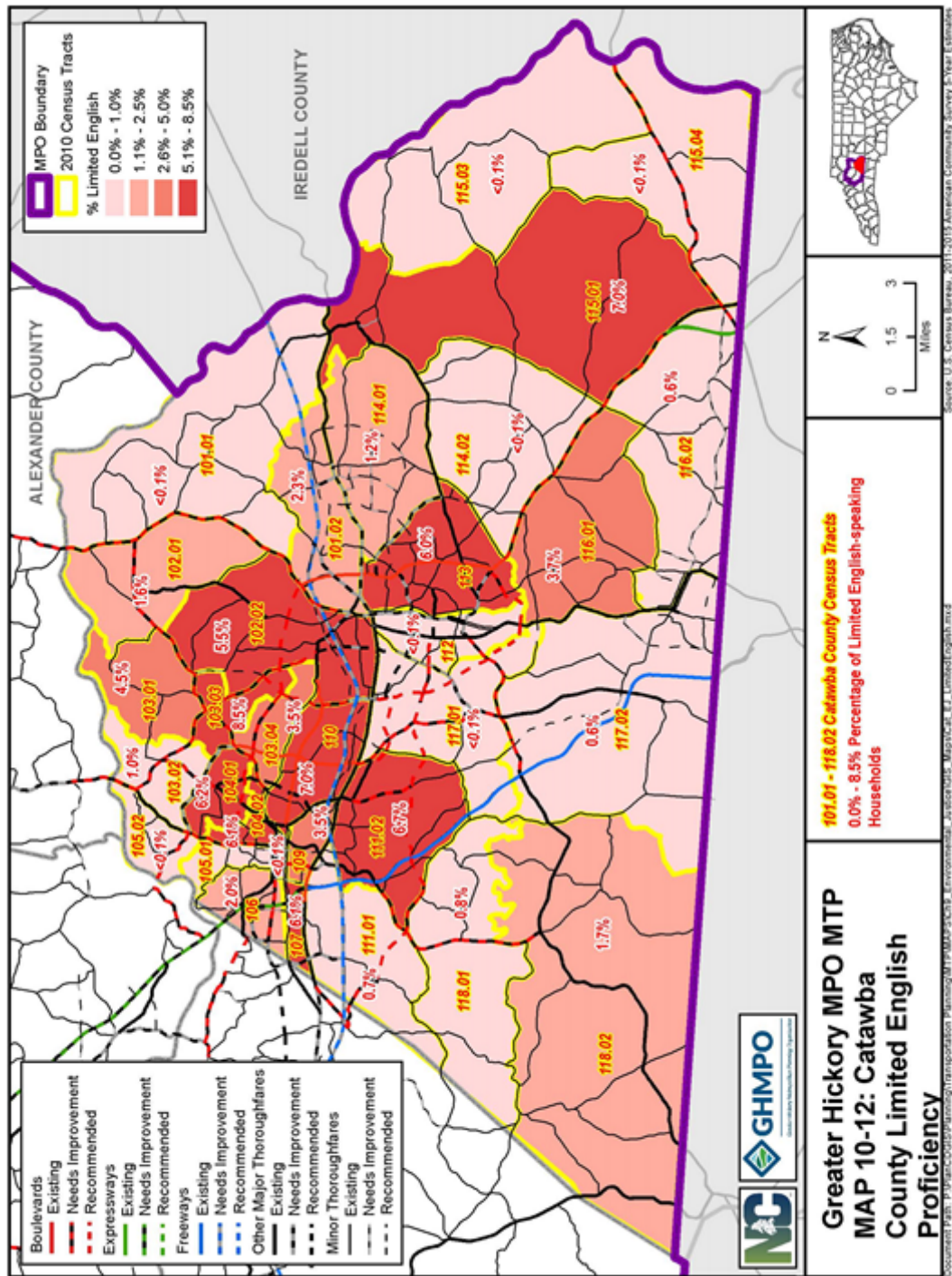
Data from the U.S. Census Bureau show the most concentrated area of limited English proficiency in Alexander County was in Census Tract 405 and encompassed 1.9% of the overall Tract population. Tracts 401, 406, and 407 had the lowest concentration of limited English proficiency at <math>< 0.1\%</math>.



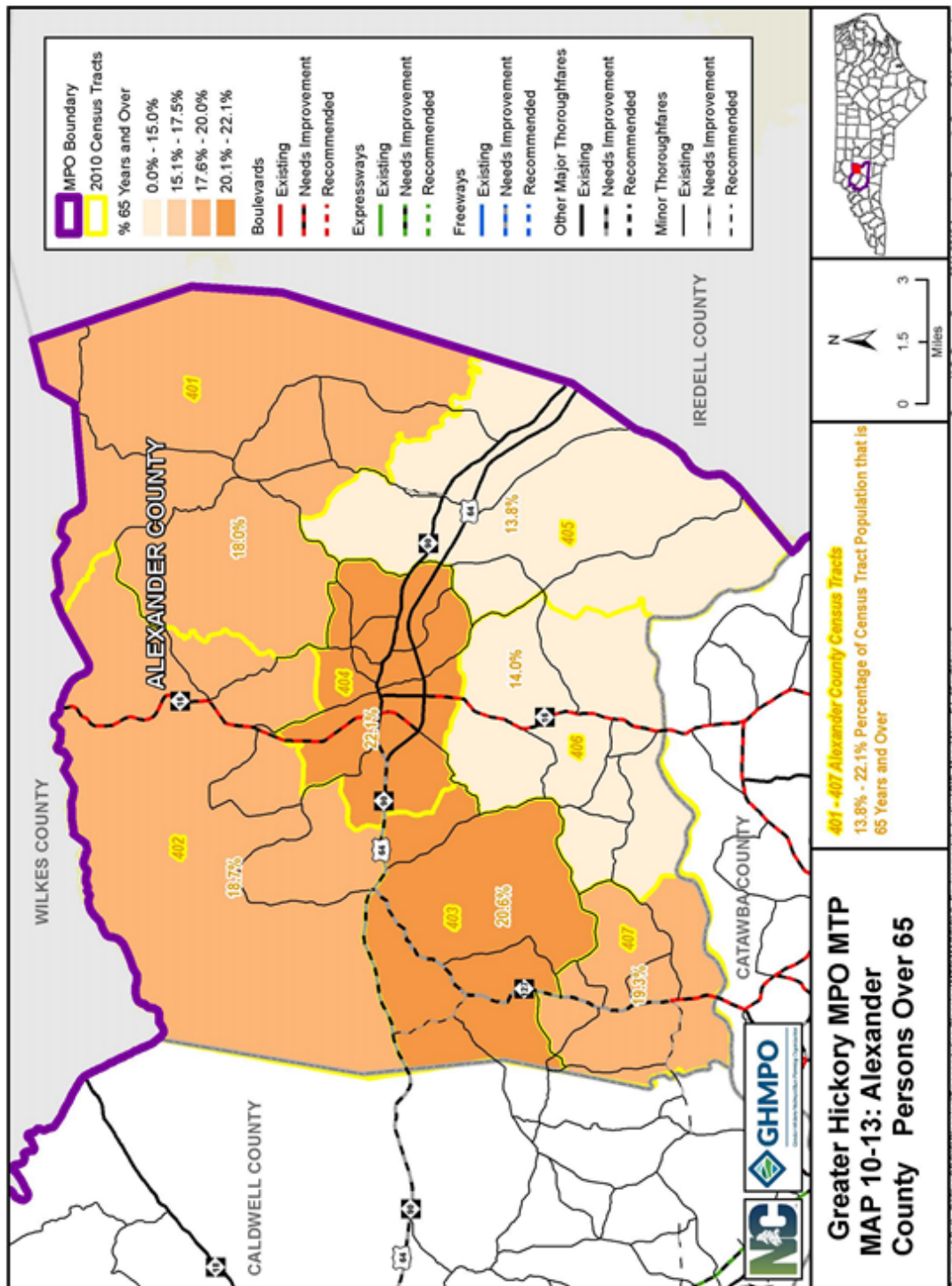
Data from the U.S. Census Bureau show the most concentrated areas of limited English proficiency in Burke County were in Census Tracts 201, 205, 206, and 212.01 and encompassed between 25.1% and 31.8% of the overall Tract population. Tract 202.01 had the lowest concentration of limited English proficiency at 11.2%.



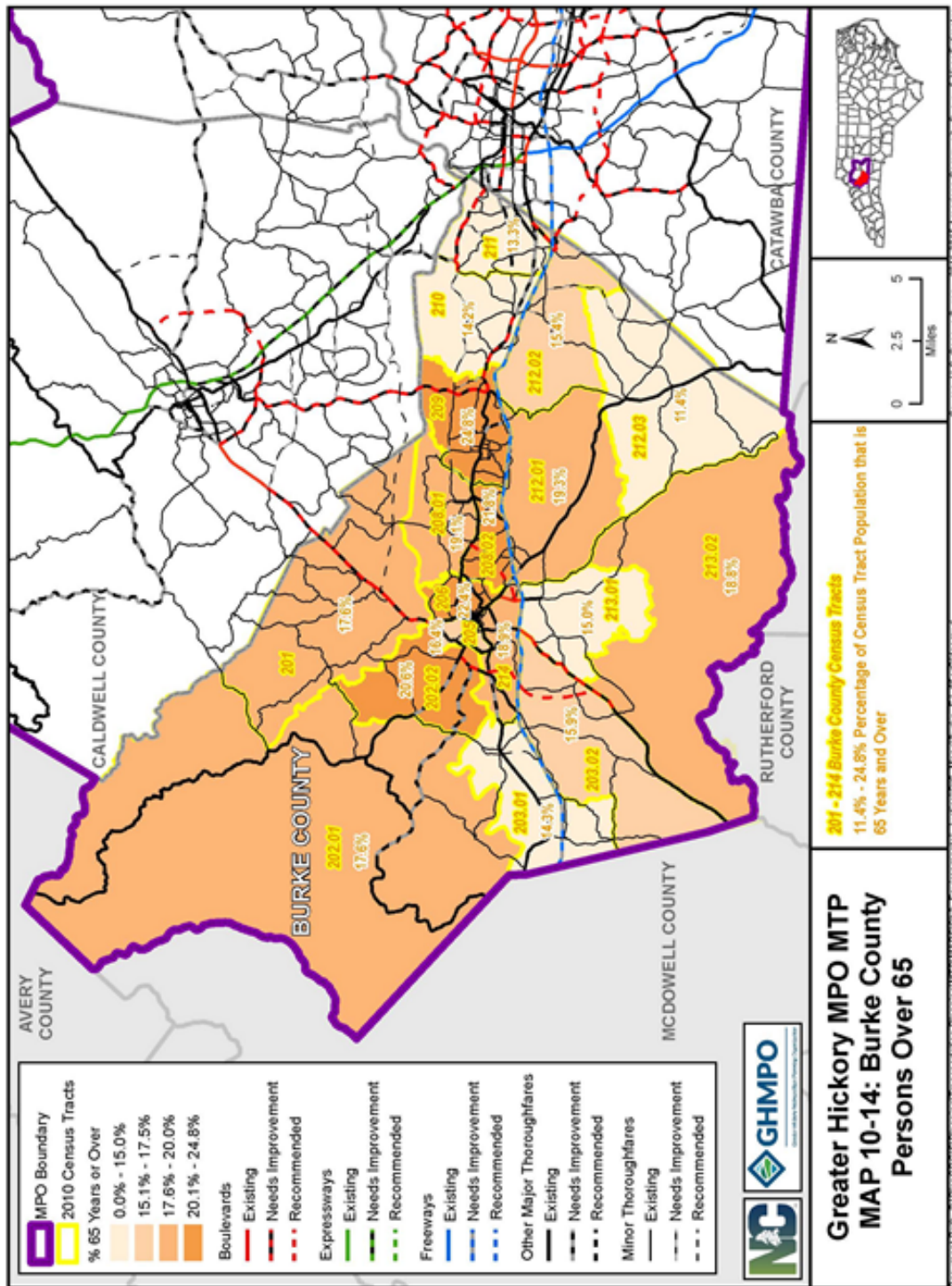
Data from the U.S. Census Bureau show the most concentrated areas of limited English proficiency in Caldwell County were in Census Tracts 314.02 and 314.03 and ranged from 5.1% to 5.8% of the overall Tract population. Tracts 302, 303, 306, 309, 310, 312.02, and 314.01 had the lowest concentration of limited English proficiency at <0.1%.



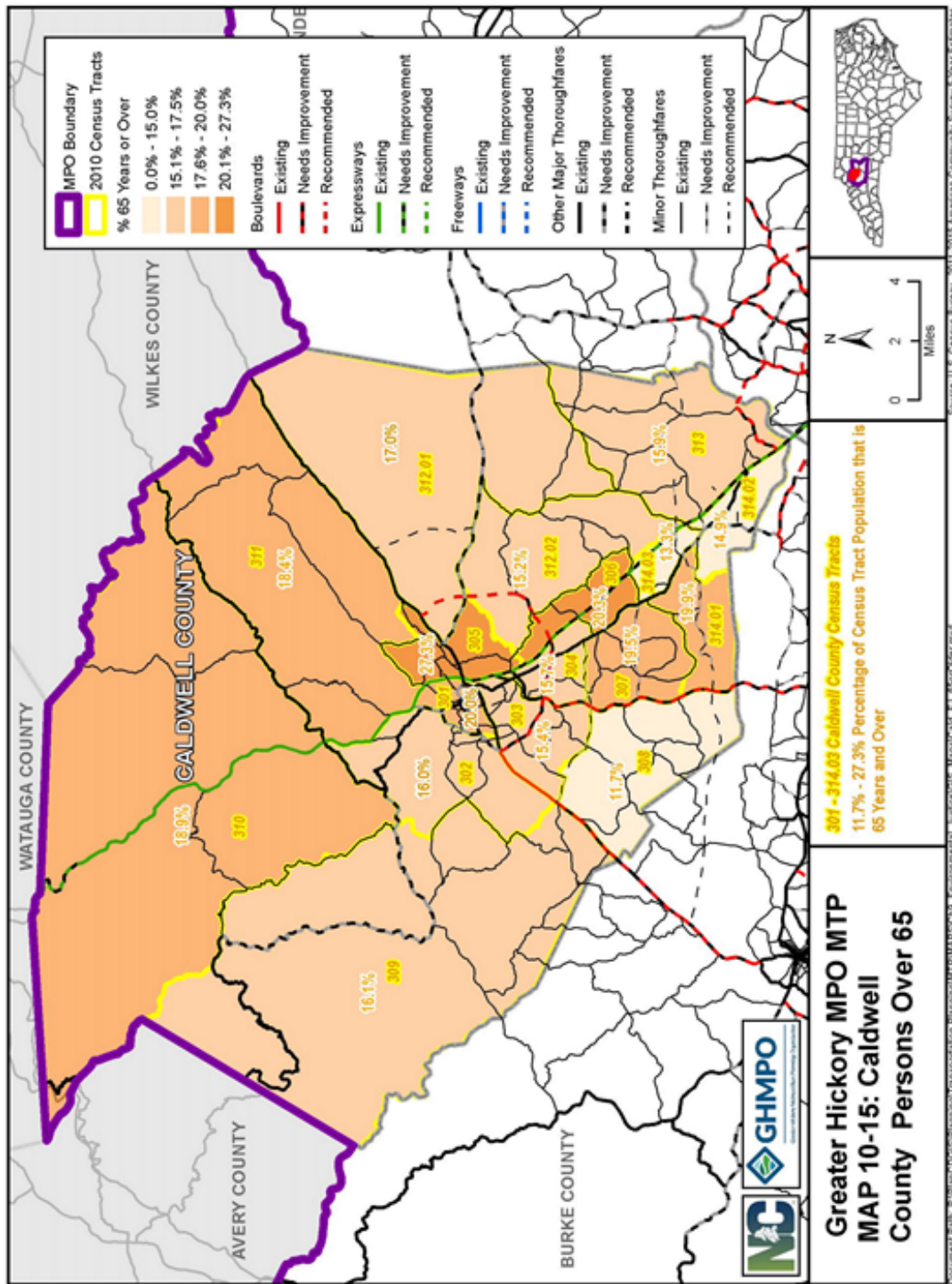
Data from the U.S. Census Bureau show the most concentrated areas of limited English proficiency in Catawba County were in Census Tracts 102.02, 103.03, 104.01, 104.02, 107, 110, 111.02, and 113 and ranged from 5.1% to 8.5% of the overall Tract population. Tracts 101.01, 105.01, 105.02, 112, 114.02, 115.03, 115.04, and 117.01 had the lowest concentration of limited English proficiency at <0.1%.



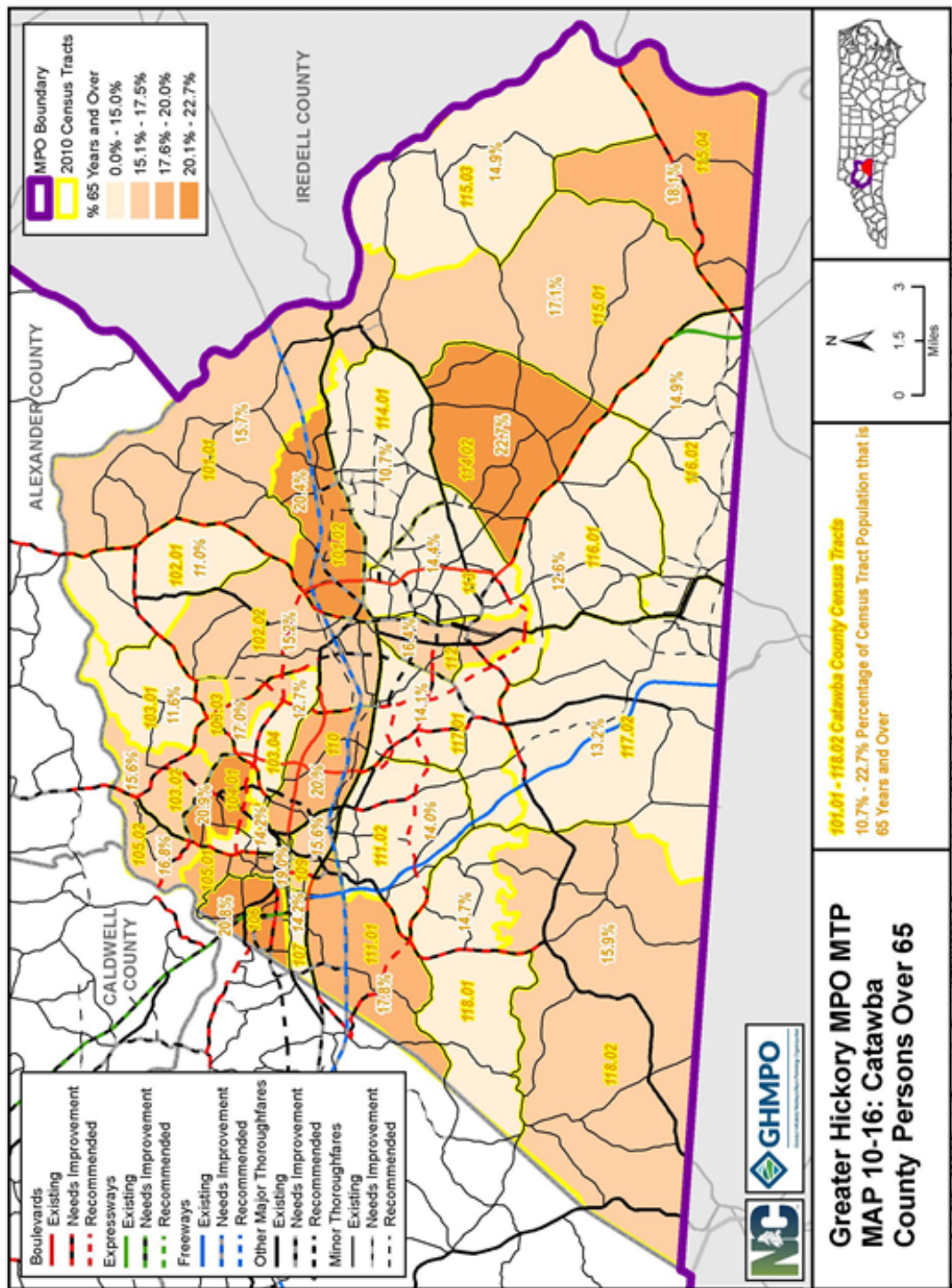
Data from the U.S. Census Bureau show the most concentrated areas of persons over the age of 65 in Alexander County were in Census Tracts 403 and 404 and ranged from 20.1% to 22.1% of the overall Tract population. Tract 405 had the lowest concentration of persons over the age of 65 at 13.8%.



Data from the U.S. Census Bureau show the most concentrated areas of persons over the age of 65 in Burke County were in Census Tracts 202.02, 206, 208.02, and 209 and ranged from 20.1% to 24.8% of the overall Tract population. Tract 212.04 had the lowest concentration of persons over the age of 65 at 11.4%.



Data from the U.S. Census Bureau show the most concentrated areas of persons over the age of 65 in Caldwell County were in Census Tracts 305 and 306 and ranged from 20.1% to 27.3% of the overall Tract population. Tract 308 had the lowest concentration of persons over the age of 65 at 11.7%.



Data from the U.S. Census Bureau show the most concentrated areas of persons over the age of 65 in Catawba County were in Census Tracts 101.02, 104.01, 106, and 114.02 and ranged from 20.1% to 22.7% of the overall Tract population. Tract 114.01 had the lowest concentration of persons over the age of 65 at 10.7%.

In Conclusion

In Alexander County, the Census Tracts with the most Title VI population overlap are Tracts 403 and 404. This demonstrates the need for greater accessibility and outreach in the Little River and Taylorsville areas. Burke County has the most Title VI population overlap in Tracts 205 and 206. This demonstrates the need for greater accessibility and outreach in the Morganton area. Caldwell County has the most Title VI population overlap in Tract 301. This demonstrates the need for greater accessibility and outreach in the Lenoir area. Catawba County has the most Title VI population overlap in Tracts 107, 109, and 113. This demonstrates the need for greater accessibility and outreach in the Long View, Eastern Newton, and Southern Claremont areas.