

Hi, just a reminder that you're receiving this email because you have expressed an interest in Western Piedmont Council of Governments. Don't forget to add jason.toney@wpcog.org to your address book so we'll be sure to land in your inbox!

You may [unsubscribe](#) if you no longer wish to receive our emails.



WPCOG - Newsletter

September 2018

Table of Contents

Calendar of Events



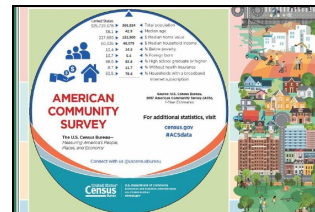
Area Agency on Aging
Upcoming Events and Programs...

[Learn more](#)

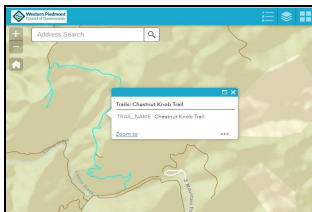


Community & Economic Development
National Preparedness month 2018...

[Learn more](#)



Community & Regional Planning
2017 American Community Survey Data Now Available... [Learn more](#)



IT/GIS Services
Burke County Quality of Life Explorer Data Update... [Learn more](#)



Regional Housing Authority
Resident Advisory Board... [Learn more](#)



Transportation Planning
Burke Transit Route Updates... [Learn more](#)



**Workforce
Development Board**
Finish Line Grants...
[Learn more](#)



IT/GIS Services

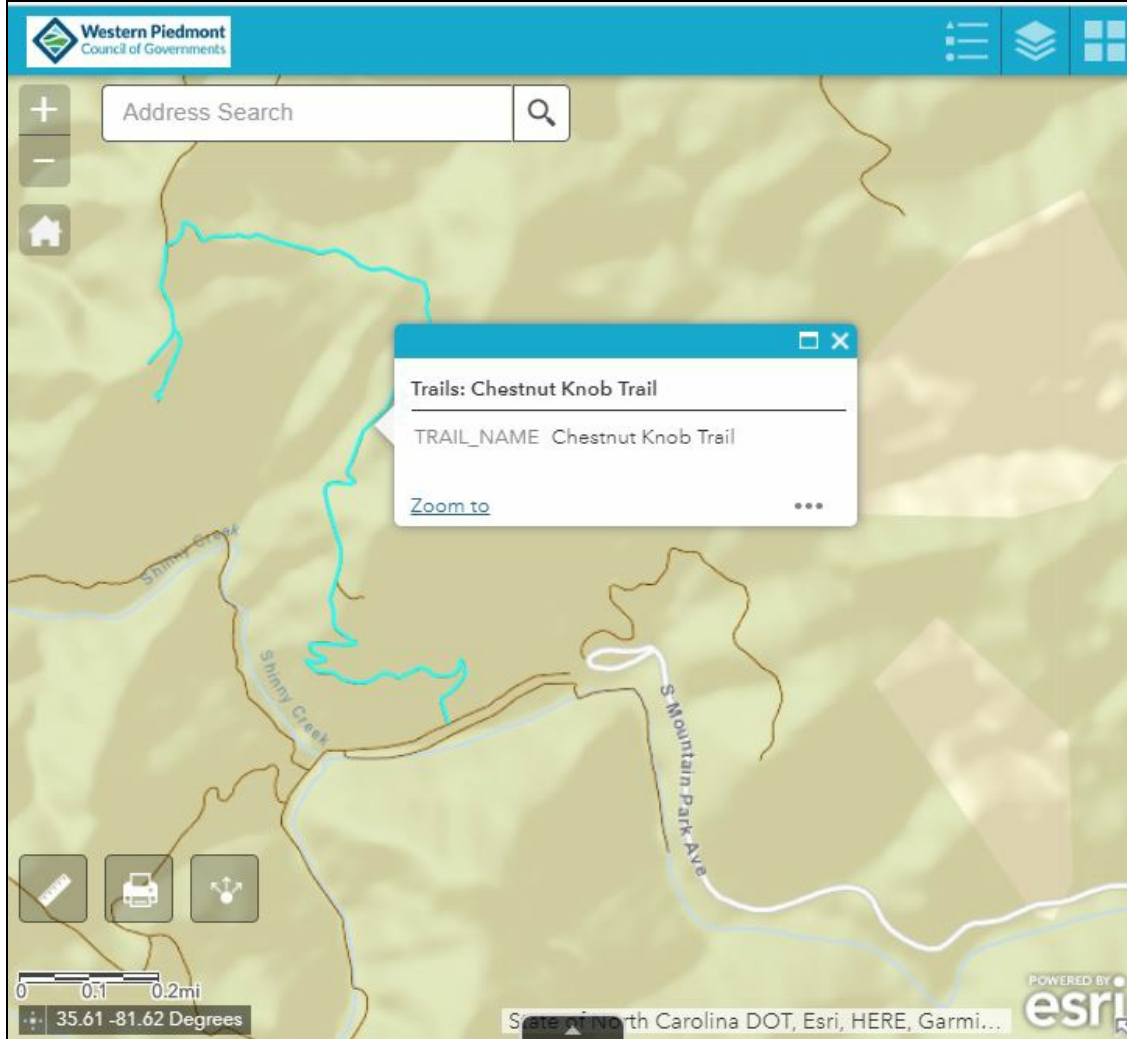
Burke County Quality of Life Explorer Data Update

Over the past several months, Western Piedmont Council of Governments (WPCOG) Information Technology/Geographic Information System (GIS) and Community & Regional Planning/Data Services staff developed several new GIS data layers and updated many of the Burke County Quality of Life (QoL) Explorer's existing datasets.

The QoL is an online, interactive map that allows users to select health and quality of life information at the Census Tract level - with just a few mouse clicks. The editing and data maintenance process included modifying existing data, and adding or removing data to reflect changes (including the locations of community resources and new demographic data provided by Census Bureau's 2012-2016 American Community Survey).

WPCOG staff added eight new map layers to the QoL based on recommendations provided by several non-profit groups during on-site training sessions conducted throughout Burke County in 2017. These new layers include:

- **Pharmacies** = locations where medications are dispensed
- **Shelters** = locations of Burke County buildings that provide shelter, food, and other forms of support
- **Morganton Greenway** = location of the City of Morganton greenway system
- **Trails** = locations of walking/hiking/biking trails within federal lands, state parks, and local parks in Burke County
- **Female Population** = percentage of Census Tract population that is female.
- **Male Population** = percentage of Census Tract population that is male
- **No Health Insurance** = percentage of Census Tract population without health insurance coverage
- **Vacant Housing** = number of unoccupied Census Tract housing units



Chestnut Knob Trail of South Mountains State Park was one of many trails added to the Burke County Quality of Life Explorer.

The Burke County Quality of Life Explorer can be accessed through the Western Piedmont Council of Government's website (www.wpcog.org) or by clicking the following [link](#).

For more information regarding the Burke County Quality of Life Explorer, please contact GIS Technician, [Todd Stroupe](#), Transportation Planner/Data Analyst, [Duncan Cavanaugh](#), or Senior Data Analyst, [Taylor Dellinger](#).

Article by Todd Stroupe and Duncan Cavanaugh

Regional Housing Authority Resident Advisory Board

Have you ever wondered why the Regional Housing Authority (RHA)/ Section 8 program operates the way it does? Do you wish you could share your concerns or ideas regarding our rules and policies?

If you are interested in learning more about the RHA's programs & voicing your opinion, here is your opportunity. The RHA is recruiting Section 8 program volunteers for its Resident Advisory Board (RAB).

The RAB will assist with the 2019 annual plan process. The RAB provides the opportunity for Section 8 participants to present input on matters that affect them, including new policies and plans. Who else can speak to what you need, what you want and what will assist your community and family most?

As a RAB committee member, all you have to do is attend a minimum of one meeting each year. Should you wish to volunteer in this year's committee, you may email kala.guido@wpcog.org, or call 828.485.4282 to express your interest. Be sure to provide your name, contact phone

number, and the county you reside. You will be contacted with information regarding the first 2019 meeting.

Article by Kala Guido

Transportation

Burke Transit Route Updates

A team led jointly by WPCOG and Greenway Public Transportation has been actively engaged in the final marketing and roll out of expanded bus service in Burke County. The four new flex routes start service on October 1. WPCOG secured multiple grants to offset half of the cost of operations by Greenway Public Transportation. The expanded service will provide reliable access to medical care, employment, low-income housing, education, and social services.

Along with Greenway, WPCOG has been holding meetings with various groups, including nonprofits, the hospital system, Western Piedmont Community College, local municipalities, and project funders. Over the next month, WPCOG and Greenway staff will present updates to the Valdese Town Council (9/4), Drexel Town Council (9/4), Morganton City Council (9/10), Burke County Commission (9/18), and Rutherford College Town Council (10/1). WPCOG is also assisting Greenway in marketing the routes at various community events.

WPCOG is designing an interactive map of the routes that will display bus stop times, locations, and a picture of each stop. Greenway also plans to launch a real-time application. The app will be easily accessible via smartphone and can track each bus, giving customers a real-time projection of when their bus will arrive.

The four new routes will offer the flexibility of a $\frac{3}{4}$ -mile deviation from the regularly scheduled routing through the communities of Morganton, Drexel, Valdese, and Rutherford College. Greenway will continue also to offer Demand Response Services for areas outside of the $\frac{3}{4}$ -mile buffer of the new routes. These rides must still be scheduled 72 hours in advance.

The cost per trip is \$1.25, though some organizations are planning to provide vouchers. Children 5 years and younger can ride at no charge. Seniors (65 and older), disabled persons, or Medicare cardholders have a discounted rate of \$.60 per trip. Any caregivers accompanying a senior citizen or disabled person can ride at no charge. The first full week of service (October 1-5) will have free rides, as well as every Friday in October (10/5, 10/12, 10/19, 10/26).

Article by Brian Horton

Workforce Development Board

Finish Line Grants

On July 12, 2018, Governor Roy Cooper announced the Finish Line Grants program to help community college students complete their training when facing unforeseen challenges. Partnerships with each workforce areas community colleges and designated Workforce Development Board will collaborate to apply for funding and review funding requests from students who have completed 75 percent of their degree or credential (including their current enrollment).

The Western Piedmont Workforce Development Board along with Caldwell Community College & Technical Institute, Catawba Valley Community College and Western Piedmont Community College are working together to determine funding needs and the processes needed by students to apply for the funding. The funding for this iteration of the program will come from the federal Workforce Innovation and Opportunity Act (WIOA).

Article by Wendy Johnson

Taking Charge!

Lunch & Learn

Thursday,
September 13, 2018
11am-1pm



LOCATION: Western Piedmont Council of
Governments Area Agency on Aging
1880 2nd Ave. NW Hickory
Call 828-485-4256 or email
mary.mitchell@wpcog.org to register and
reserve your lunch. Deadline to register
Monday, September 10, 2018
Lunch provided at no charge by



Register Today!

Learn More About Options & Choices

Long-Term Care
Options

Medicaid

Powers of Attorney

*What is it?
How do I get it?
How do I know if I need it?*

These questions and more answered with presentations from the experts!

Abernethy Laurels

Patrick, Harper and Dixon, Attorneys at Law

Caldwell Social Services



Presented by Long Term Care Ombudsman
& Family Caregiver Support Programs

Gadgets . Devices . Technology . Making Life Easier

LUNCH
&
LEARN

FREE EDUCATIONAL
PROGRAM for
Adults 50 and up & Caregivers

Ridgeview Recreation Center

115 7th Avenue SW Hickory, NC

Thursday, September 20

11:00 am - 2:00 pm

Great
door
prizes!

GUEST SPEAKERS TO INCLUDE....

Catawba County Library

Hickory Public Library

Catawba Regional Hospice

Catawba Valley Community College
(CVCC)



Special thanks to SIR Senior Information
Resources for sponsoring the lunch

Andrea Nixon, Senior Recreation Programmer
Ridgeview Recreation Center 115 7th Avenue SW Hickory, NC 28602
Phone: (828) 324-8007 Fax: (828) 323-1042
Email: anixon@hickorync.gov www.hickorync.gov
"We work so others can play"

RSVP by Monday, September 17 to reserve your lunch.
Contact Ridgeview Recreation Center (828) 324-8007.



Community & Economic Development
National Preparedness Month 2018



Disasters Happen

PREPARE NOW

LEARN HOW



FEMA

Ready. 



Additional Items to Consider Adding to an Emergency Supply Kit:

- Prescription medications and glasses
- Infant formula and diapers
- Pet food and extra water for your pet
- Important family documents such as copies of insurance policies, identification and bank account records in a waterproof, portable container
- Cash or traveler's checks and change
- Emergency reference material such as a first aid book or information from www.ready.gov
- Sleeping bag or warm blanket for each person. Consider additional bedding if you live in a cold-weather climate.
- Complete change of clothing including a long sleeved shirt, long pants and sturdy shoes. Consider additional clothing if you live in a cold-weather climate.
- Household chlorine bleach and medicine dropper – When diluted nine parts water to one part bleach, bleach can be used as a disinfectant. Or in an emergency, you can use it to treat water by using 16 drops of regular household liquid bleach per gallon of water. Do not use scented, color safe or bleaches with added cleaners.
- Fire Extinguisher
- Matches in a waterproof container
- Feminine supplies and personal hygiene items
- Mess kits, paper cups, plates and plastic utensils, paper towels
- Paper and pencil
- Books, games, puzzles or other activities for children

Ready 

Prepare. Plan. Stay Informed. ®



Emergency Supply List



FEMA

www.ready.gov



Recommended Items to Include in a Basic Emergency Supply Kit:

- Water, one gallon of water per person per day for at least three days, for drinking and sanitation
- Food, at least a three-day supply of non-perishable food
- Battery-powered or hand crank radio and a NOAA Weather Radio with tone alert and extra batteries for both
- Flashlight and extra batteries
- First aid kit
- Whistle to signal for help
- Dust mask, to help filter contaminated air and plastic sheeting and duct tape to shelter-in-place
- Moist towelettes, garbage bags and plastic ties for personal sanitation
- Wrench or pliers to turn off utilities
- Can opener for food (if kit contains canned food)
- Local maps

Through its *Ready Campaign*, the Federal Emergency Management Agency educates and empowers Americans to take some simple steps to prepare for and respond to potential emergencies, including natural disasters and terrorist attacks. **Ready** asks individuals to do three key things: get an emergency supply kit, make a family emergency plan, and be informed about the different types of emergencies that could occur and their appropriate responses.

All Americans should have some basic supplies on hand in order to survive for at least three days if an emergency occurs. Following is a listing of some basic items that every emergency supply kit should include. However, it is important that individuals review this list and consider where they live and the unique needs of their family in order to create an emergency supply kit that will meet these needs. Individuals should also consider having at least two emergency supply kits, one full kit at home and smaller portable kits in their workplace, vehicle or other places they spend time.



Federal Emergency Management Agency
Washington, DC 20472

Community & Regional Planning

2017 American Community Survey Data Now Available

On September 13, 2018 the US Census Bureau released data from the 2017 American Community Survey (ACS) for all areas with populations of 65,000 or more. More than 40 topics are available from the 2017 ACS including educational attainment, housing, employment, commuting, language spoken at home, nativity, ancestry and selected monthly homeowner costs. For 2017 ACS data for the Hickory-Lenoir-Morganton Metropolitan Statistical Area (MSA), Burke County, Caldwell County and Catawba County click [here](#).

2017 American Community Survey Data Wheel

First, select a geography level

State Congressional District Metropolitan Statistical Area

Second, select a state → North Carolina

Third, select a metro area → Hickory-Lenoir-Morganton, NC Metro Area

Metric	Value	Percentage
Total population	366,534	42.9
Median age	38.1	13.4
\$ Median home value	217,600	13.7
\$ Median household income	60,336	88.0
% Below poverty	13.4	8.7
% Foreign born	13.7	83.5
% High school graduate or higher	88.0	82.4
% Without health insurance	8.7	11.7
% Households with a broadband Internet subscription	83.5	78.4

Source: U.S. Census Bureau, 2017 American Community Survey (ACS), 1-Year Estimates.

For additional statistics, visit census.gov #ACSdata

The U.S. Census Bureau—Measuring America's People, Places, and Economy

Connect with us @uscensusbureau.

United States Census Bureau
U.S. Department of Commerce
Economics and Statistics Administration
U.S. CENSUS BUREAU
census.gov

Article by Taylor Dellinger



Calendar of Events

September

- 18 - WPAQC Meeting (10am)
- 25 - WPCOG Policy Board Meeting (6pm)
- 26 - Greater Hickory MPO TAC/TCC (2pm)

October

- 17 - Water Resources Committee Meeting (11am)
- 22 - Regional Aging Provider Meeting (2pm)
- 23 - WPCOG Executive Committee Meeting (6pm)
- 24 - Greater Hickory MPO TAC/TCC (2pm/3:30pm)
- 25 - Mayor/Chairman/Manager Meeting (6pm)

November

- 12 - Regional Aging Advisory Committee/STHL Meeting (12pm)
- 14 - Regional Managers' Meeting (12pm)
- 27 - WPCOG Policy Board Meeting (6pm)
- 28 - Greater Hickory MPO TAC/TCC (2pm/3:30pm)
- TBA - Annual Landlord Meeting

Stay Connected



1880 2nd Ave NW · Hickory, NC 28601 · 828.322.9191

www.wpcog.org