



**Western Piedmont**  
Council of Governments

*Creative Regional Solutions Since 1968*



# Town of Sawmills Bicycle & Pedestrian Plan

Steering Committee #2

Tuesday, December 8, 5pm

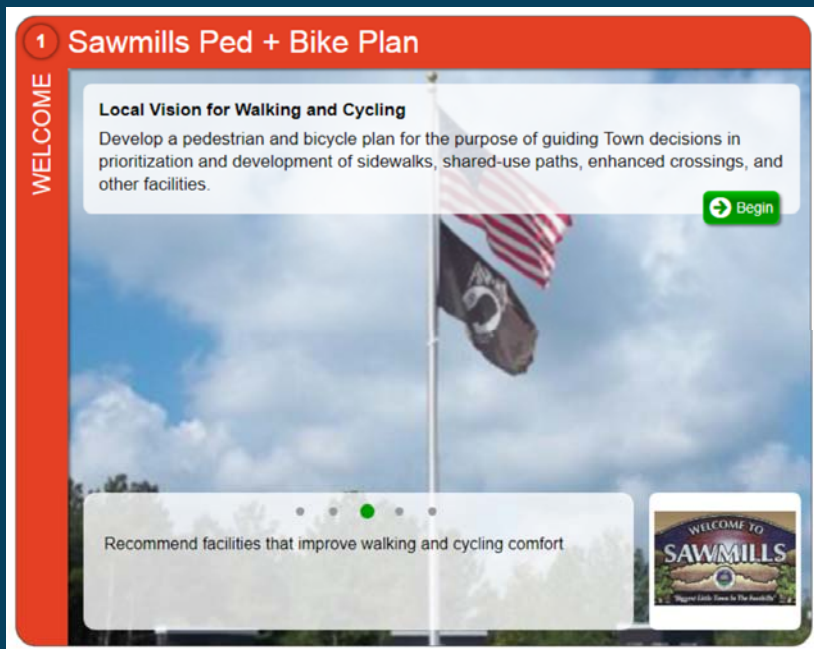
Sawmills Town Hall (and Zoom)

# Survey Results

Issues and Trends



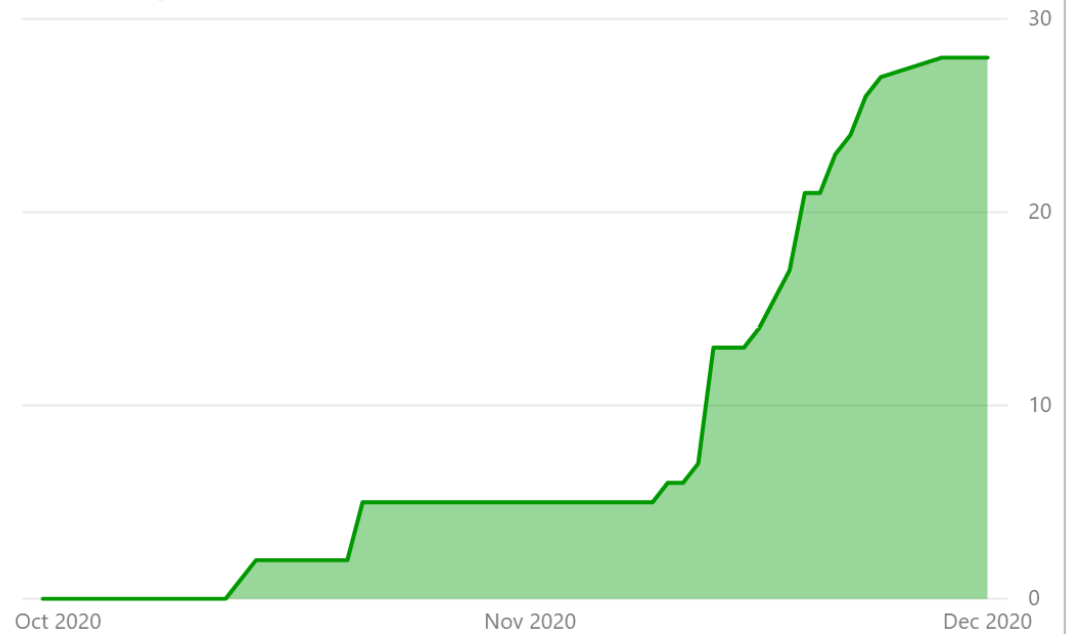
# Survey Participation



→ PARTICIPANTS → URLS → PLATFORMS → VISITS → ALL

Total number of participants over time.

Participants  
28



\* Participants are visitors who submitted data. Traffic data shown in Time Zone (UTC).

# Survey Questions

### 3 Rank Your Values

VALUES

Order your top 5 items above this line

- Sidewalks
- Bicycle lanes
- Safer road crossings
- Shared-use paths
- Connect homes to schools
- Connect homes to parks
- Connect business areas
- Off-road trails

Rank what's important to you. You may also add comments to any of the choices listed, plus suggest another item.

Please drag 5 of the items above the line in your preferred order.

Suggest another

### 4 Map Your Priorities

DESTINATIONS

Please drag and drop at least 1 marker on the map.

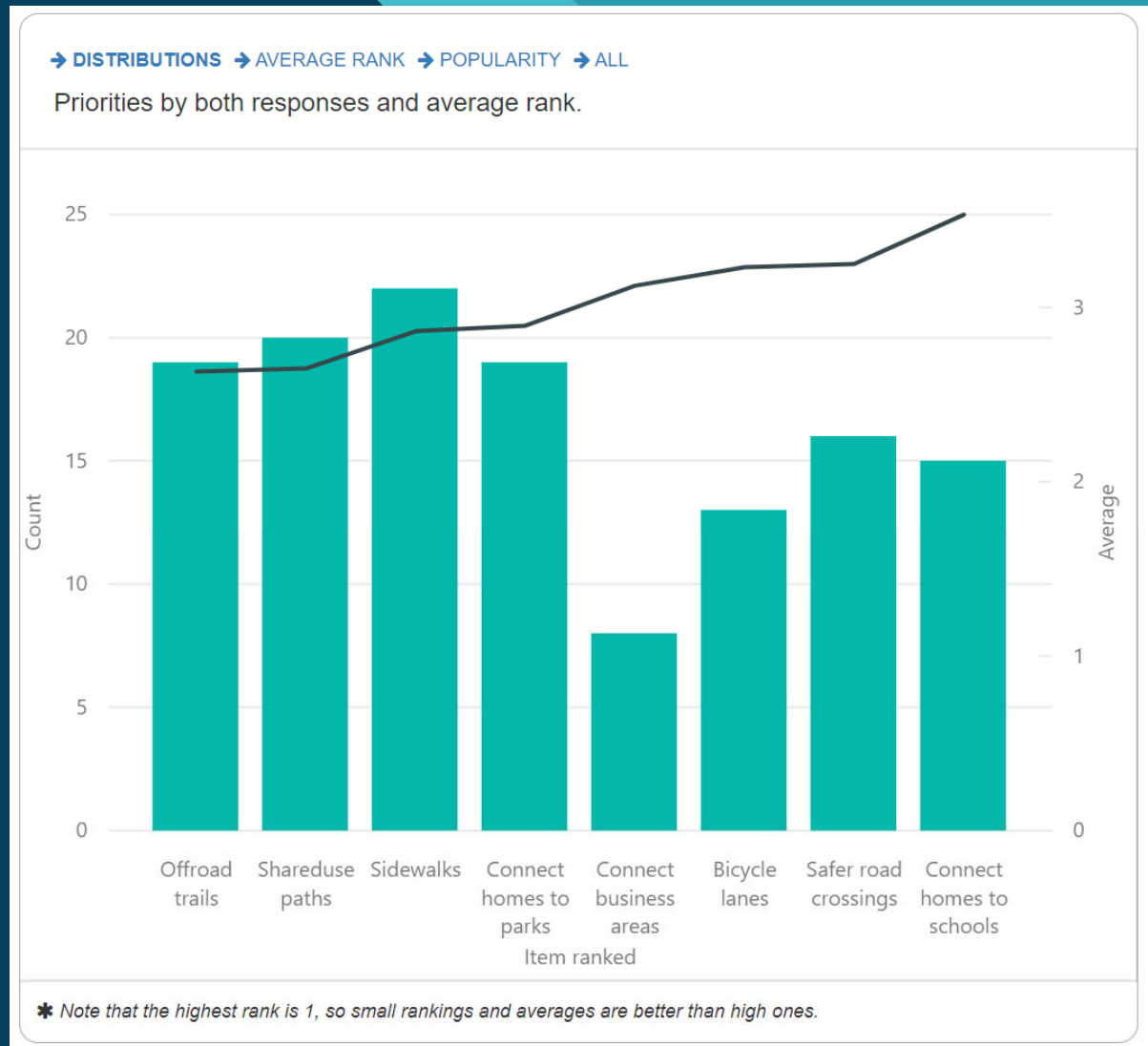
- Home
- School
- Work
- Shopping
- Recreation
- Other

Zoom to: [dropdown]

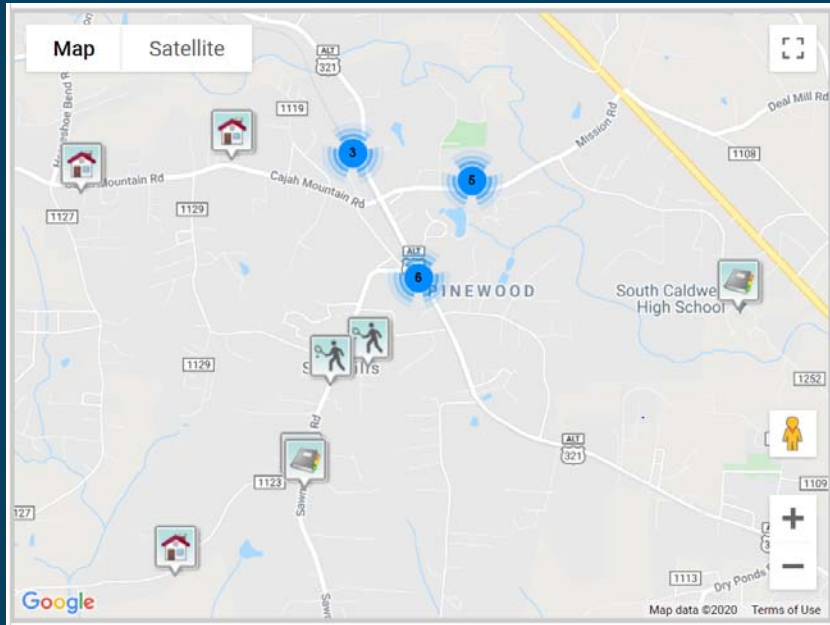
Map data ©2020 Terms of Use Report a map error

# Survey Responses

- Top Five by bar
  - Sidewalks
  - Shared-Use Paths
  - Off-Road Trails
  - Connect Homes to Parks
  - Safer Road Crossings
- Ranking by line
  - Off-Road Trails
  - Shared-Use Paths
  - Sidewalks
  - Connect Homes to Parks
  - Connect Business Areas

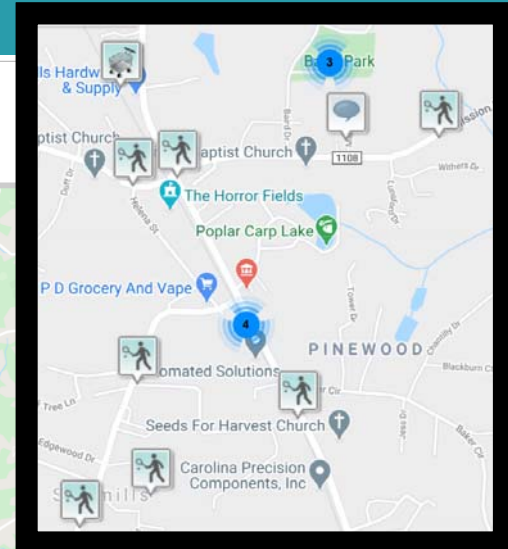
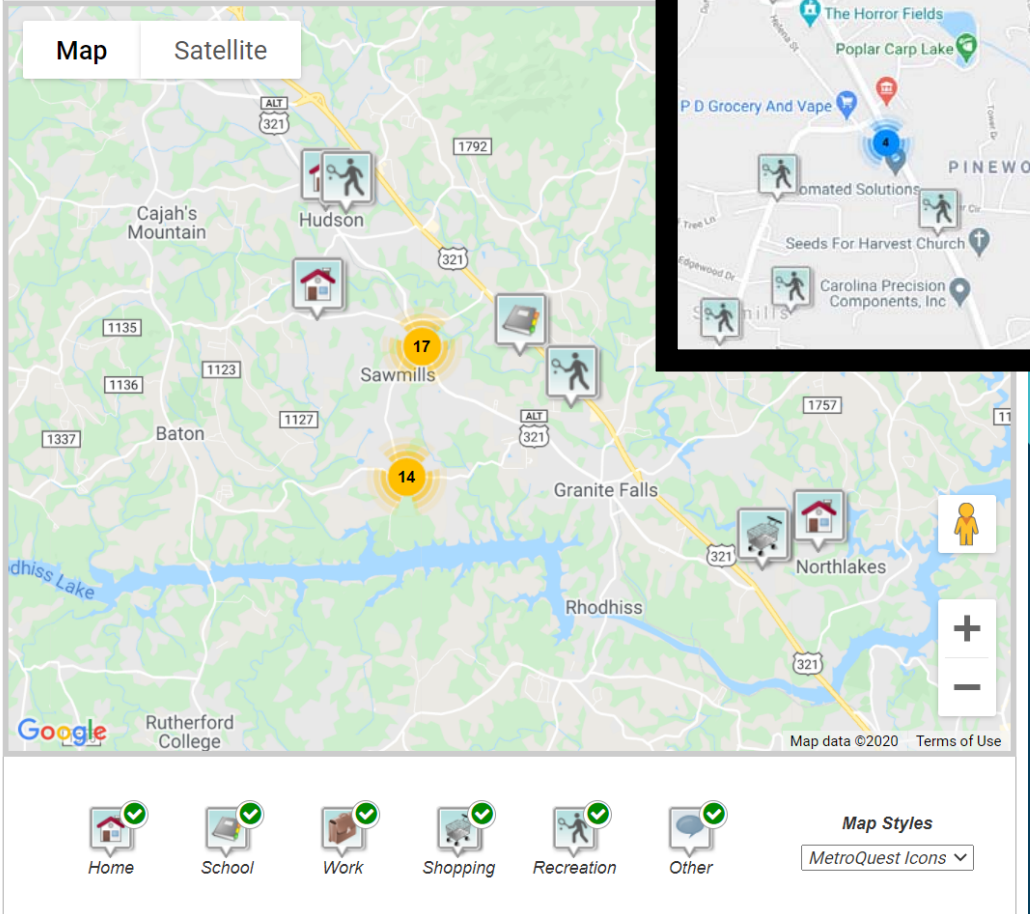


# Survey Responses



## MAP MARKERS

A map showing the distribution of map markers by type.



# Field Collection

Photos and Observations



# Typical Conditions

- Mission and Baird Road walking audit
- Curb ramps, driveway cuts, sidewalks
- High, moderate, low priority items

## ADA Collection Map

### Curb Ramp

- High
- Moderate
- Low
- Unknown

### Driveway Cuts

- High
- Moderate
- Low
- Unknown

### Sidewalks

- High
- Moderate
- Low
- Unknown



This map serves the purpose of collecting data points for the ADA division within Planning at WPCOG.

WPCOG IT/GIS Services | NC CGIA, USDA FSA, Maxar



# Typical Conditions

- 321A
- Curb ramps, driveway cuts, railroad crossings, sidewalks
- High, moderate, and low priority items

## ADA Collection Map

### Curb Ramp

- High
- Moderate
- Low
- Unknown

### Driveway Cuts

- High
- Moderate
- Low
- Unknown

### Railroad Crossing

- High
- Moderate
- Low

### Sidewalks

- High
- Moderate
- Low
- Unknown



This map serves the purpose of collecting data points for the ADA division within Planning at WPCOG.

300ft

WPCOG IT/GIS Services | NC CGIA, USDA FSA, Maxar

# Typical Conditions

- Sawmills School Road
- Curb ramps
- High priority – lack of detectable warnings

## ADA Collection Map

### Curb Ramp

- High
- Moderate
- Low
- Unknown



This map serves the purpose of collecting data points for the ADA division within Planning at WPCOG.

WPCOG IT/GIS Services | NC CGIA, USDA FSA, Maxar

# Example Problems - Curb Ramps



## Example Problems - Driveway Cuts



# Sidewalks and Railroad Crossing



# Community Hub

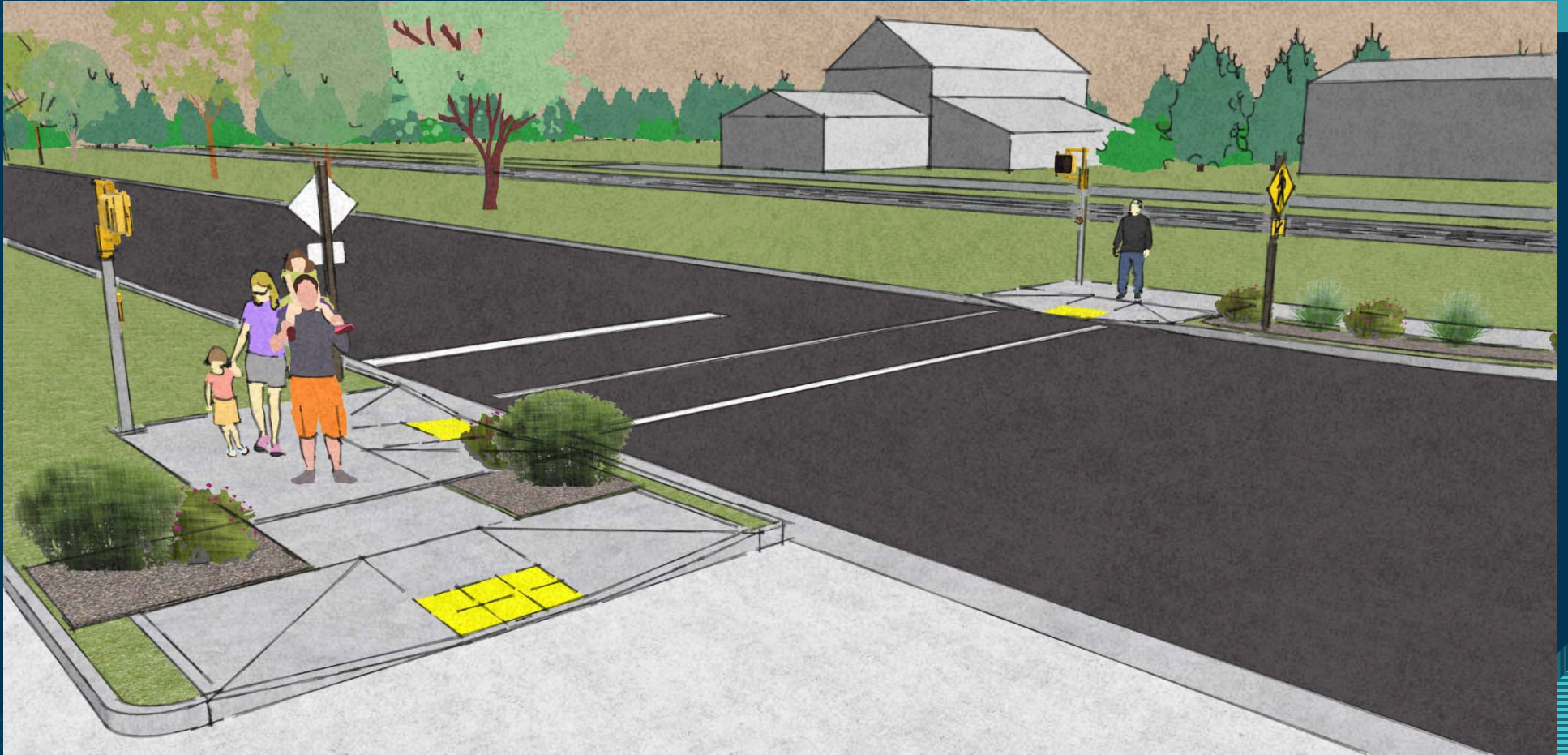
Downtown Renderings



# Sidewalk Gap at Railroad

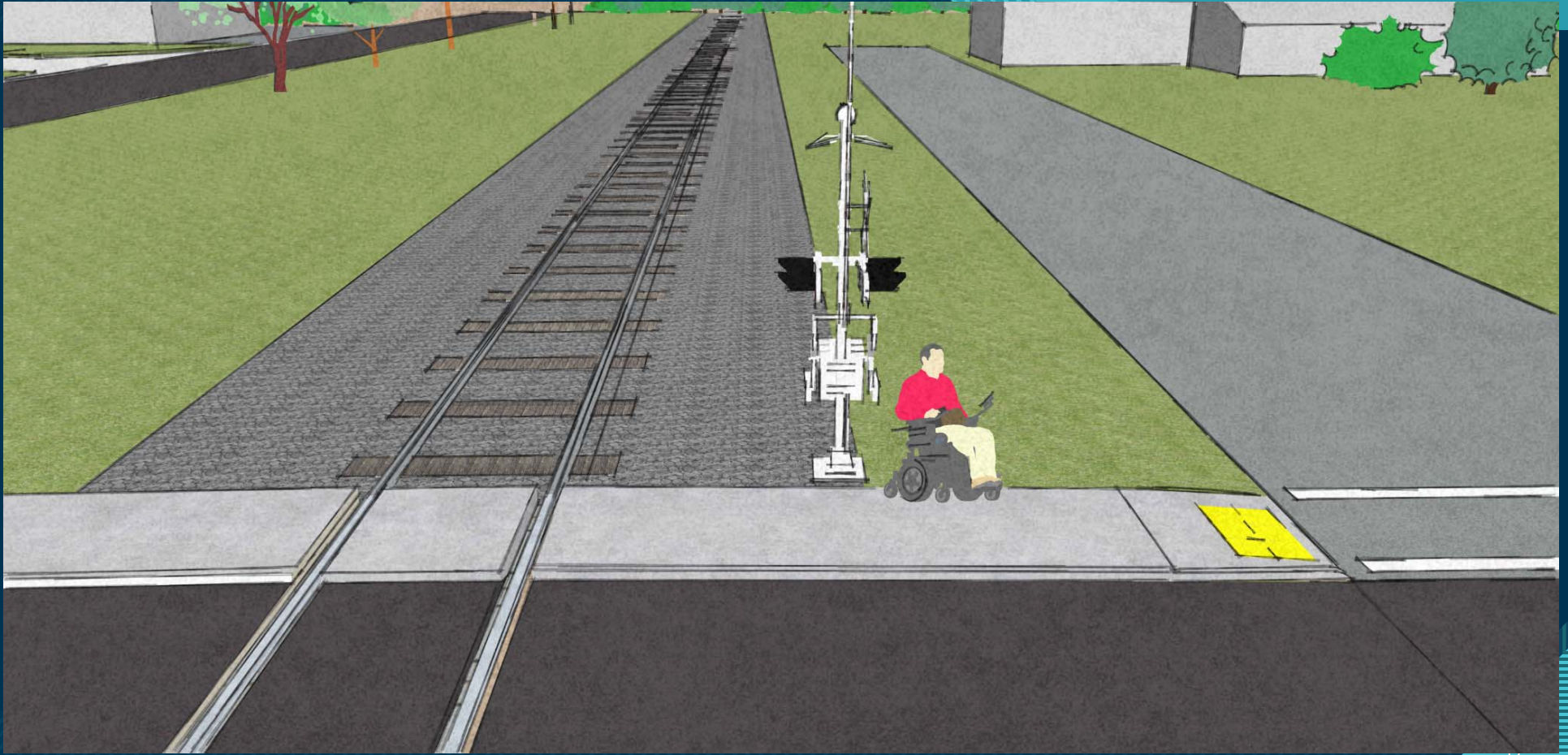


# Crossing US 321A





# Crossing Railroad



# Crossing Sawmills School Rd



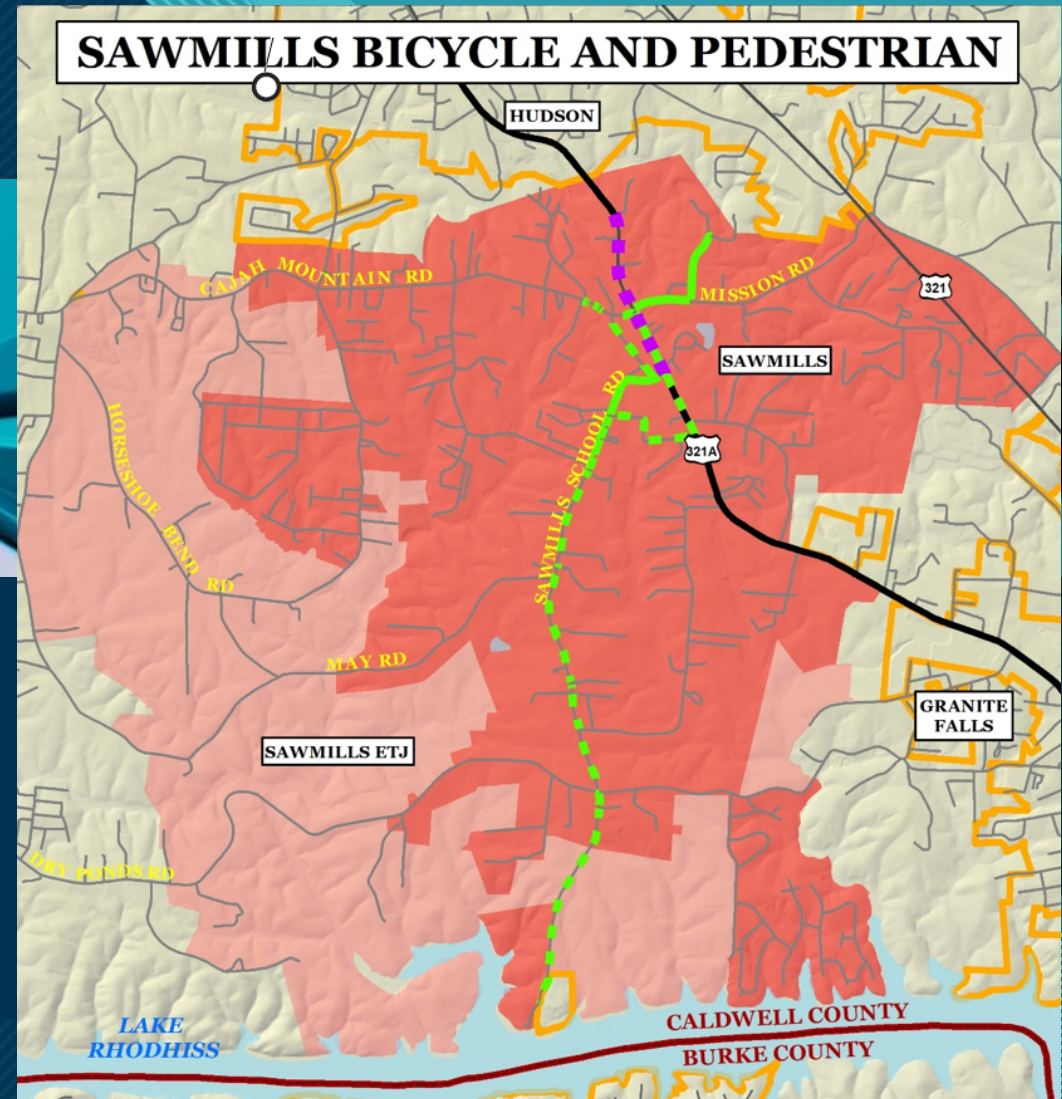
# Breakout Exercise

Typical Sections by Corridor Type



# Visualizing Facilities

- Discuss corridor types
- Experiment with different facilities
- Discuss trade-offs
- Recommend any emerging consensus



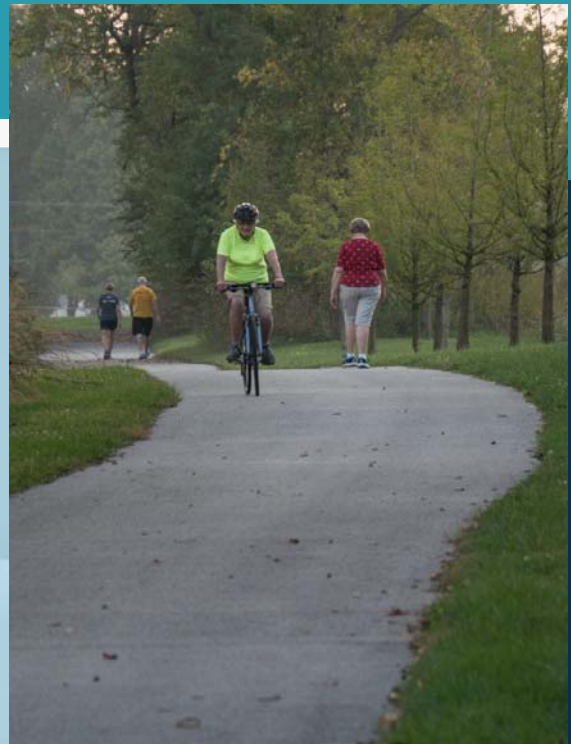
# Typical Section - Sidewalk



# Typical Section - 30' Setback



# Typical Section - Multi-Use Path



# Project Timeline



Launch

Background



Survey

Field Research



Issues

Concepts



Refinement

Typical Sections



Adoption

**Meeting #1**  
October 13,  
2020

**Meeting #2**  
December 8,  
2020

**Meeting #3**  
March 9,  
2021





# Next Meeting

## Topic

Draft Recommendations

## Date

Tuesday, March 9, 2021, 5pm

# THANK YOU!

Brian.Horton@wpcog.org  
828-485-4225

