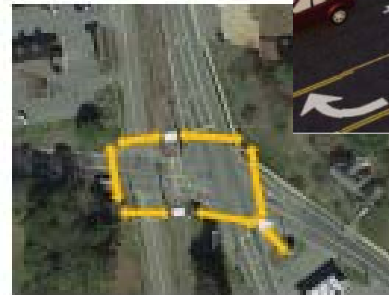
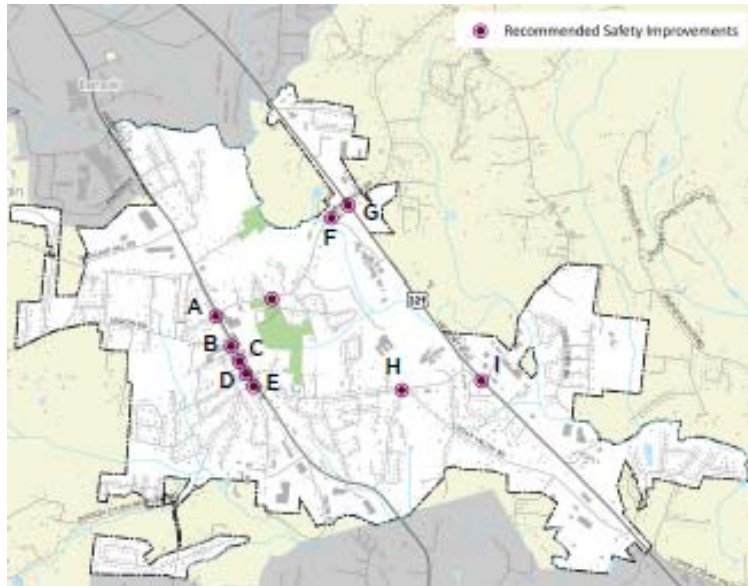


Town of Hudson – Main St (321A) Pedestrian Enhancements

TOWN OF HUDSON BICYCLE & PEDESTRIAN PLAN



\$544,000 STBG-DA
\$136,000 Local Match
 \$680,000 Total

Project	Local Match (15 max)	Crash Exposure (15 max)	ROW Avail. (15 max)	Closing Gap (15 Max)	Econ. Dev't (5 max)	Total Cost (10 max)	Proximity to School (10 max)	New Project (5 max)	CMAQ (5 max)	Supports EJ (5 max)	Total
Hudson - Main St (321A)	0	15	15	0	5	10	5	5	5	0	60