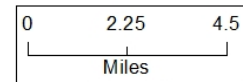


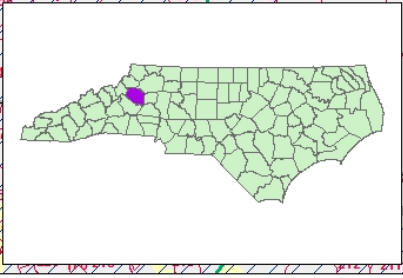
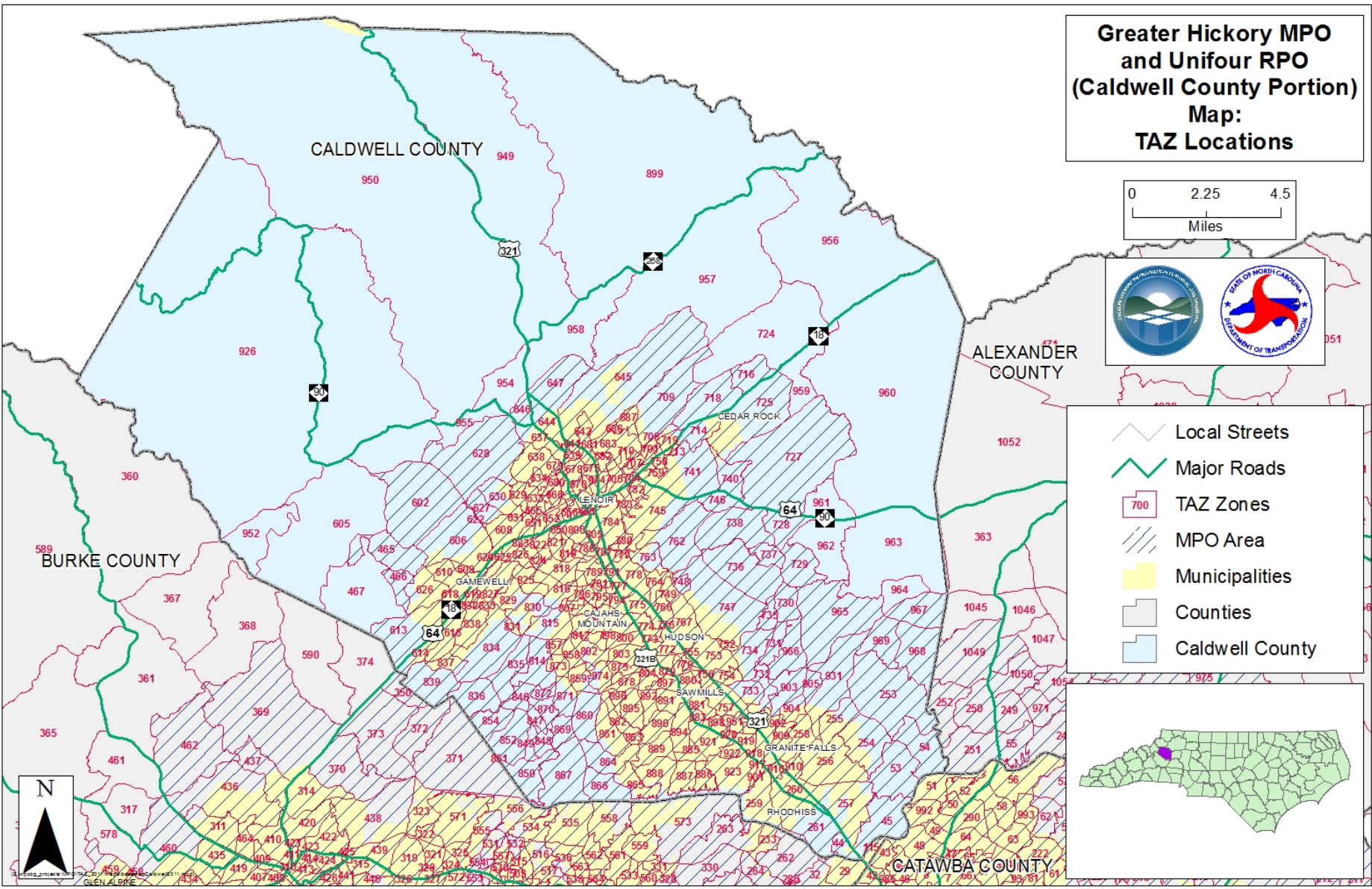
Caldwell County Maps



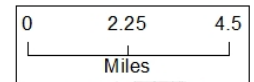
**Greater Hickory MPO
and Unifour RPO
(Caldwell County Portion)
Map:
TAZ Locations**



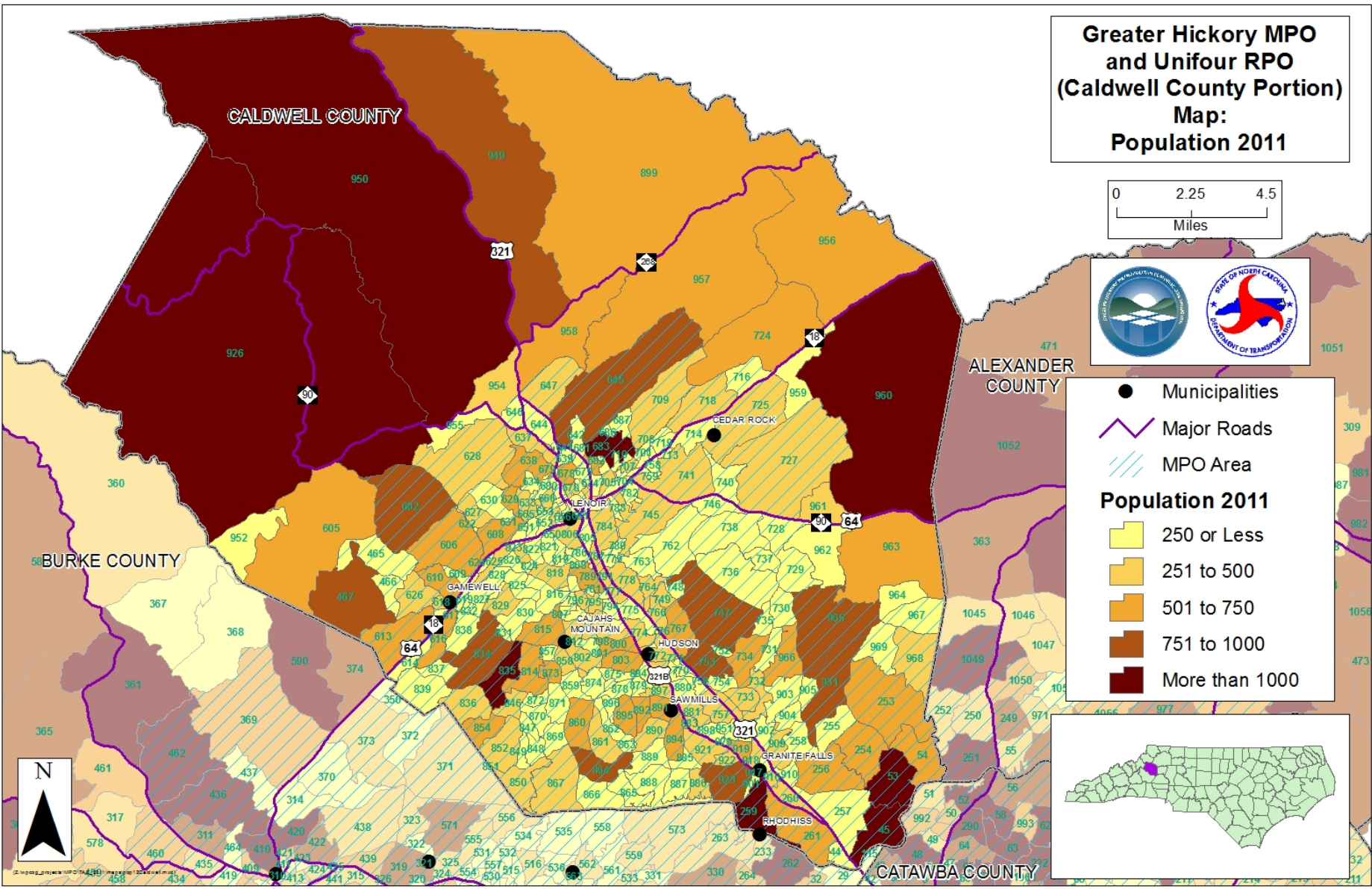
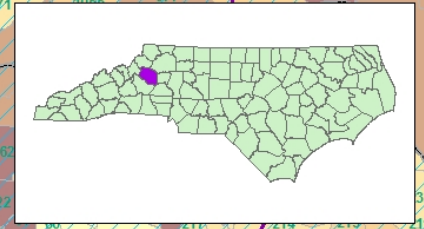
- Local Streets
- Major Roads
- TAZ Zones
- MPO Area
- Municipalities
- Counties
- Caldwell County



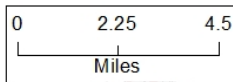
**Greater Hickory MPO
and Unifour RPO
(Caldwell County Portion)
Map:
Population 2011**



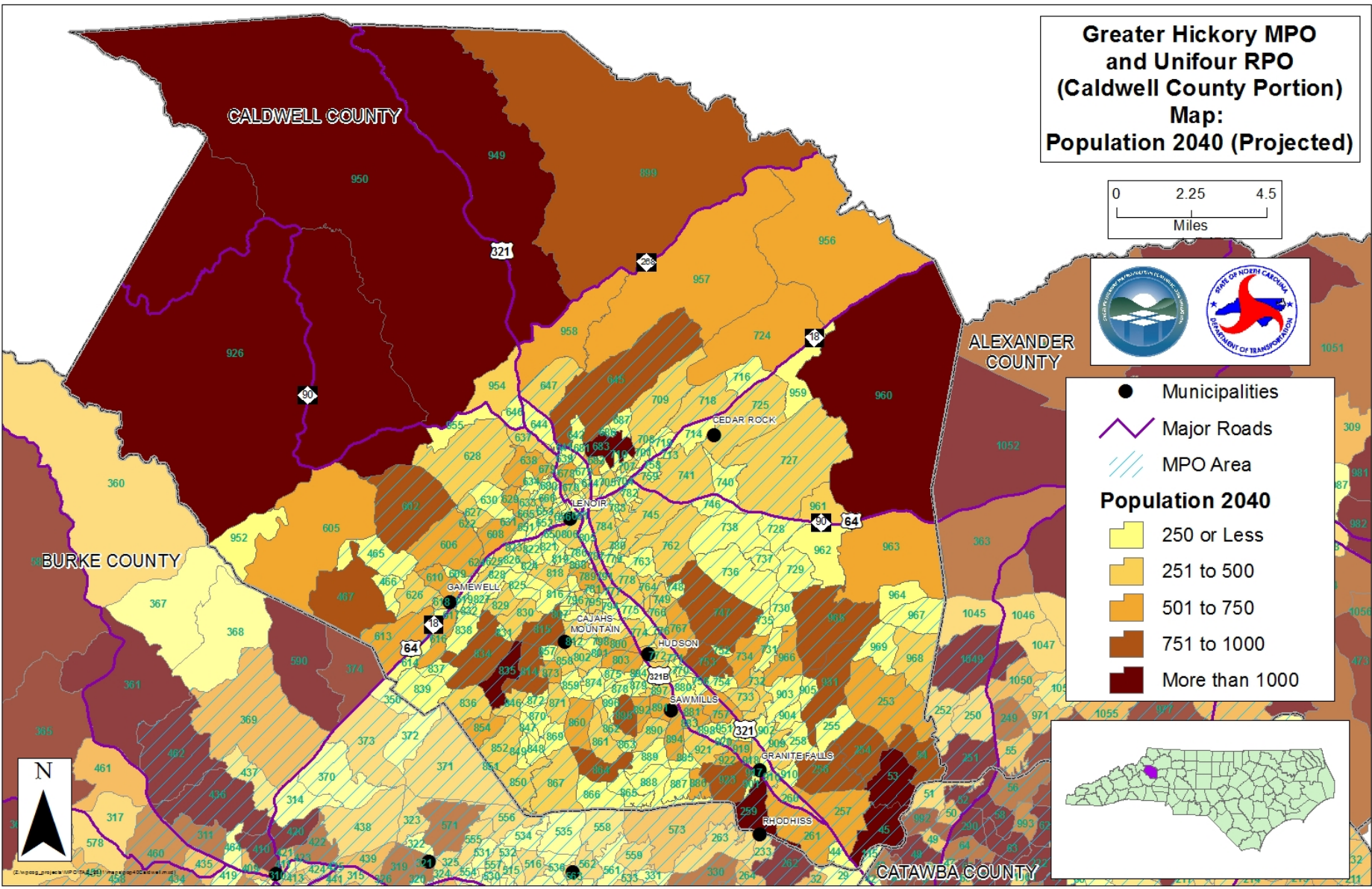
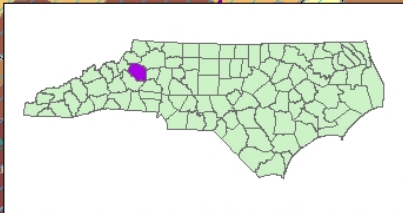
- Municipalities
 - Major Roads
 - ▨ MPO Area
- Population 2011**
- 250 or Less
 - 251 to 500
 - 501 to 750
 - 751 to 1000
 - More than 1000



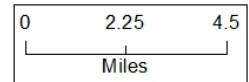
**Greater Hickory MPO
and Unifour RPO
(Caldwell County Portion)
Map:
Population 2040 (Projected)**



- Municipalities
 - Major Roads
 - ▨ MPO Area
- Population 2040**
- 250 or Less
 - 251 to 500
 - 501 to 750
 - 751 to 1000
 - More than 1000



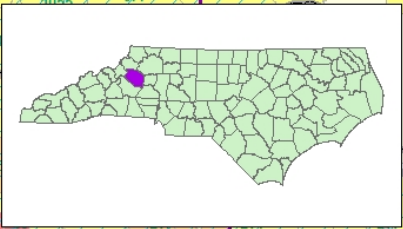
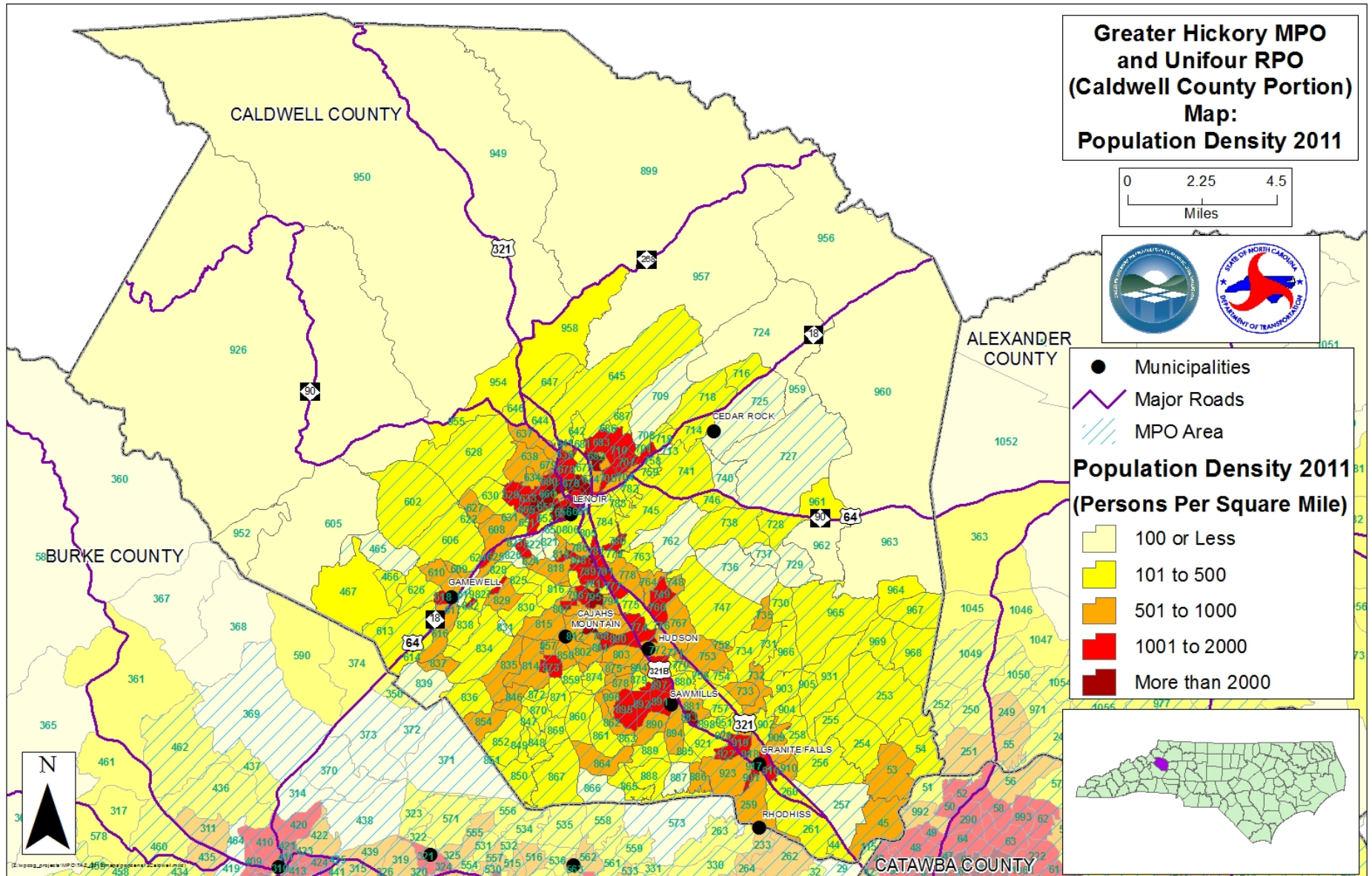
**Greater Hickory MPO
and Unifour RPO
(Caldwell County Portion)
Map:
Population Density 2011**



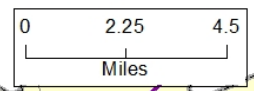
- Municipalities
- Major Roads
- ▨ MPO Area

**Population Density 2011
(Persons Per Square Mile)**

- 100 or Less
- 101 to 500
- 501 to 1000
- 1001 to 2000
- More than 2000



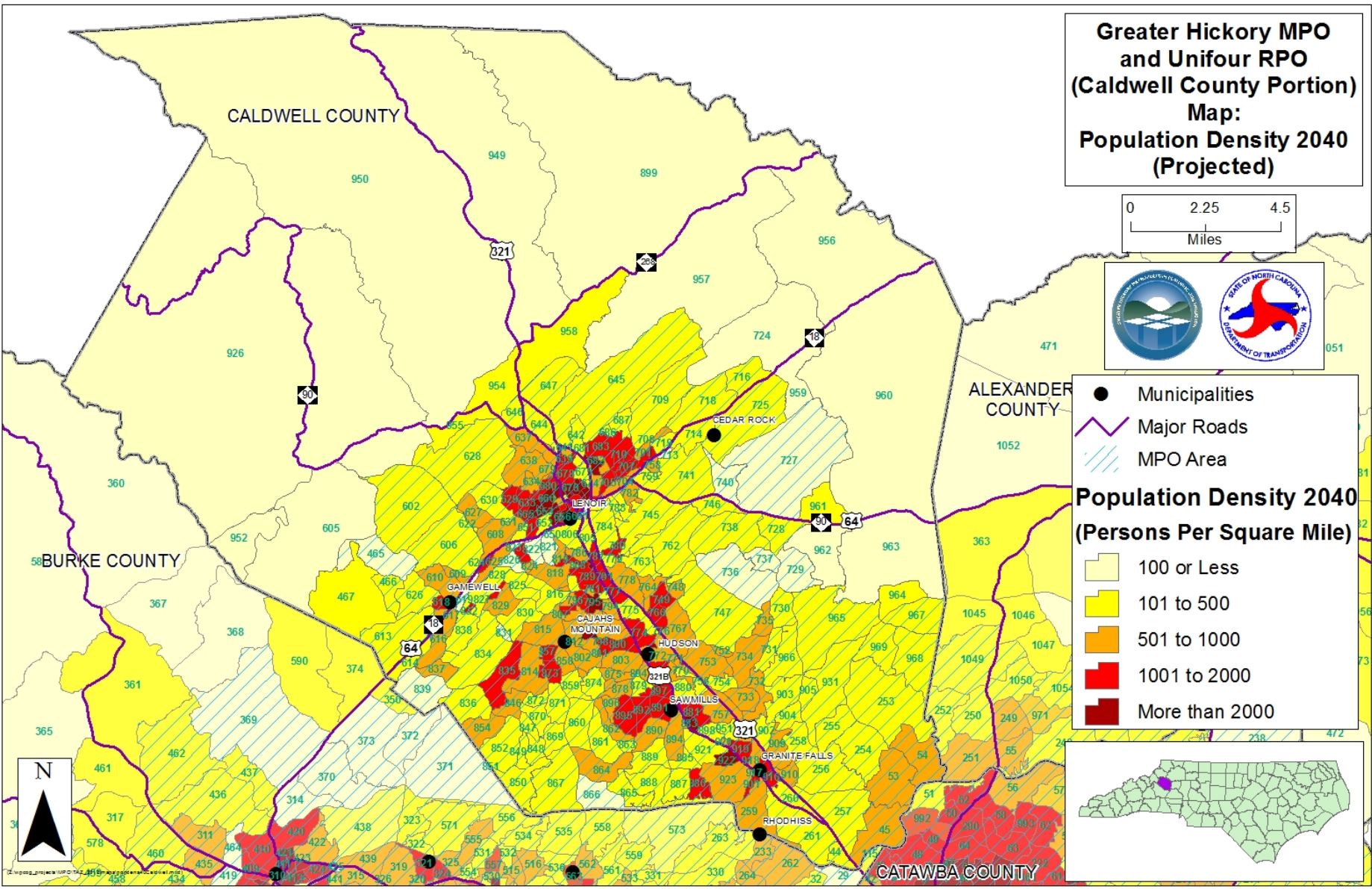
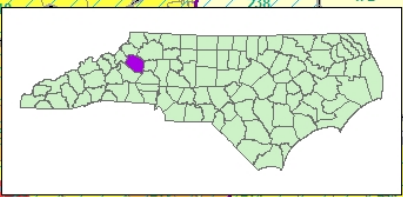
**Greater Hickory MPO
and Unifour RPO
(Caldwell County Portion)
Map:
Population Density 2040
(Projected)**



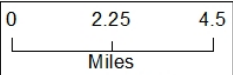
- Municipalities
- Major Roads
- ▨ MPO Area

**Population Density 2040
(Persons Per Square Mile)**

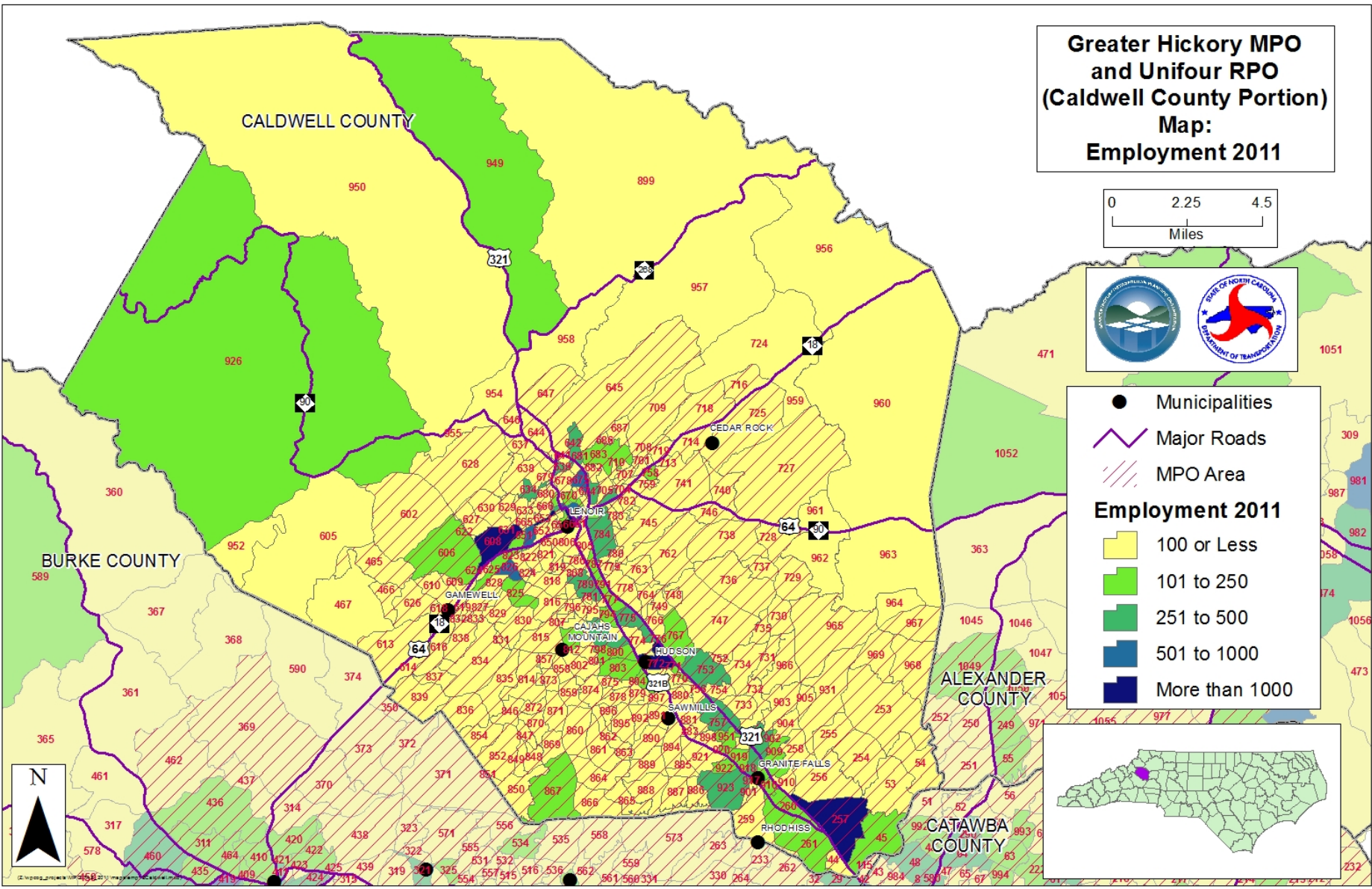
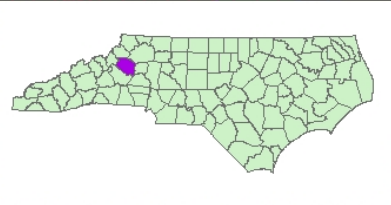
- 100 or Less
- 101 to 500
- 501 to 1000
- 1001 to 2000
- More than 2000



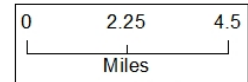
**Greater Hickory MPO
and Unifour RPO
(Caldwell County Portion)
Map:
Employment 2011**



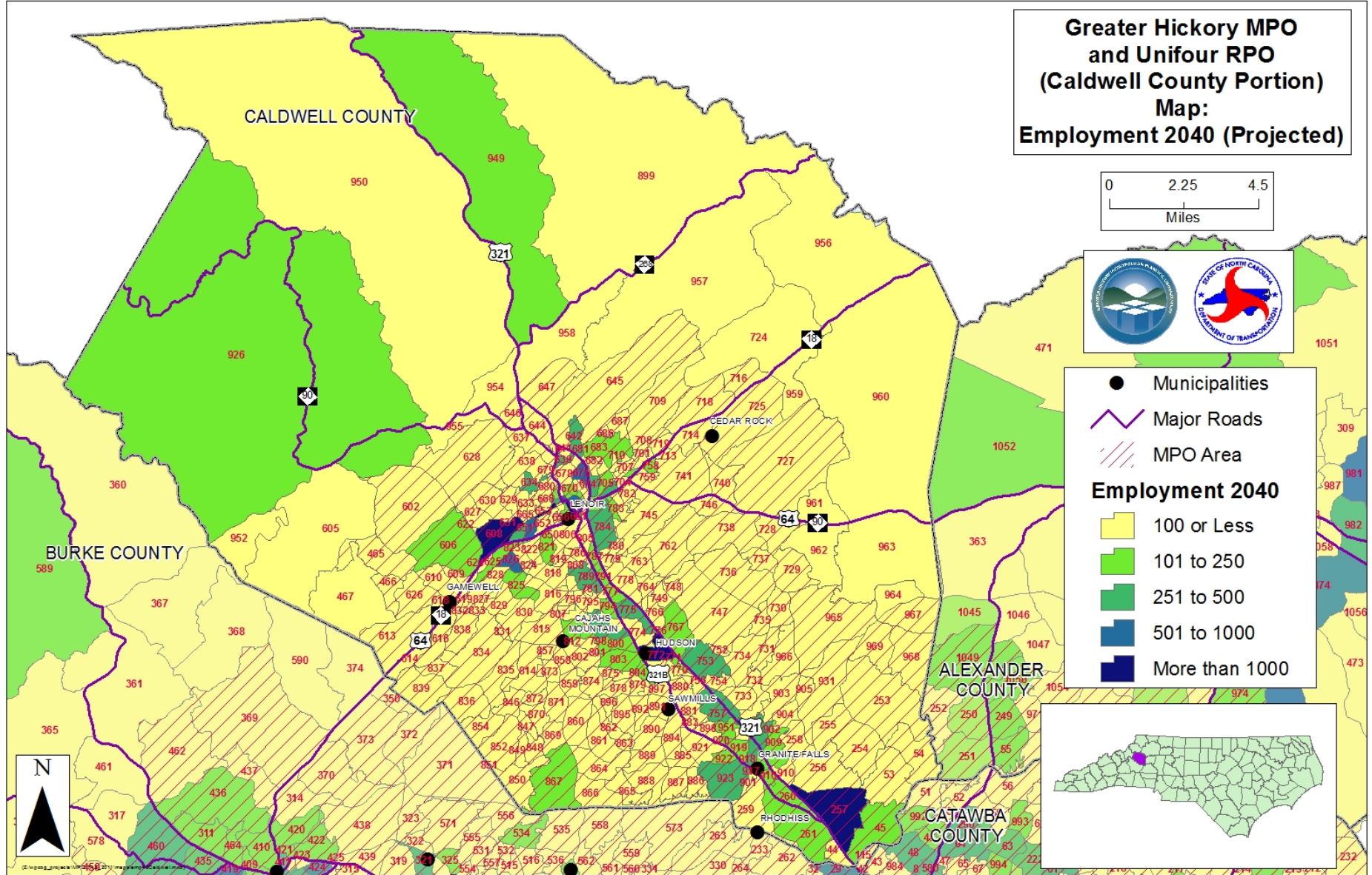
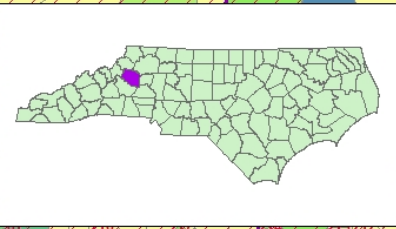
- Municipalities
- Major Roads
- ▨ MPO Area
- Employment 2011**
- 100 or Less
- 101 to 250
- 251 to 500
- 501 to 1000
- More than 1000



**Greater Hickory MPO
and Unifour RPO
(Caldwell County Portion)
Map:
Employment 2040 (Projected)**

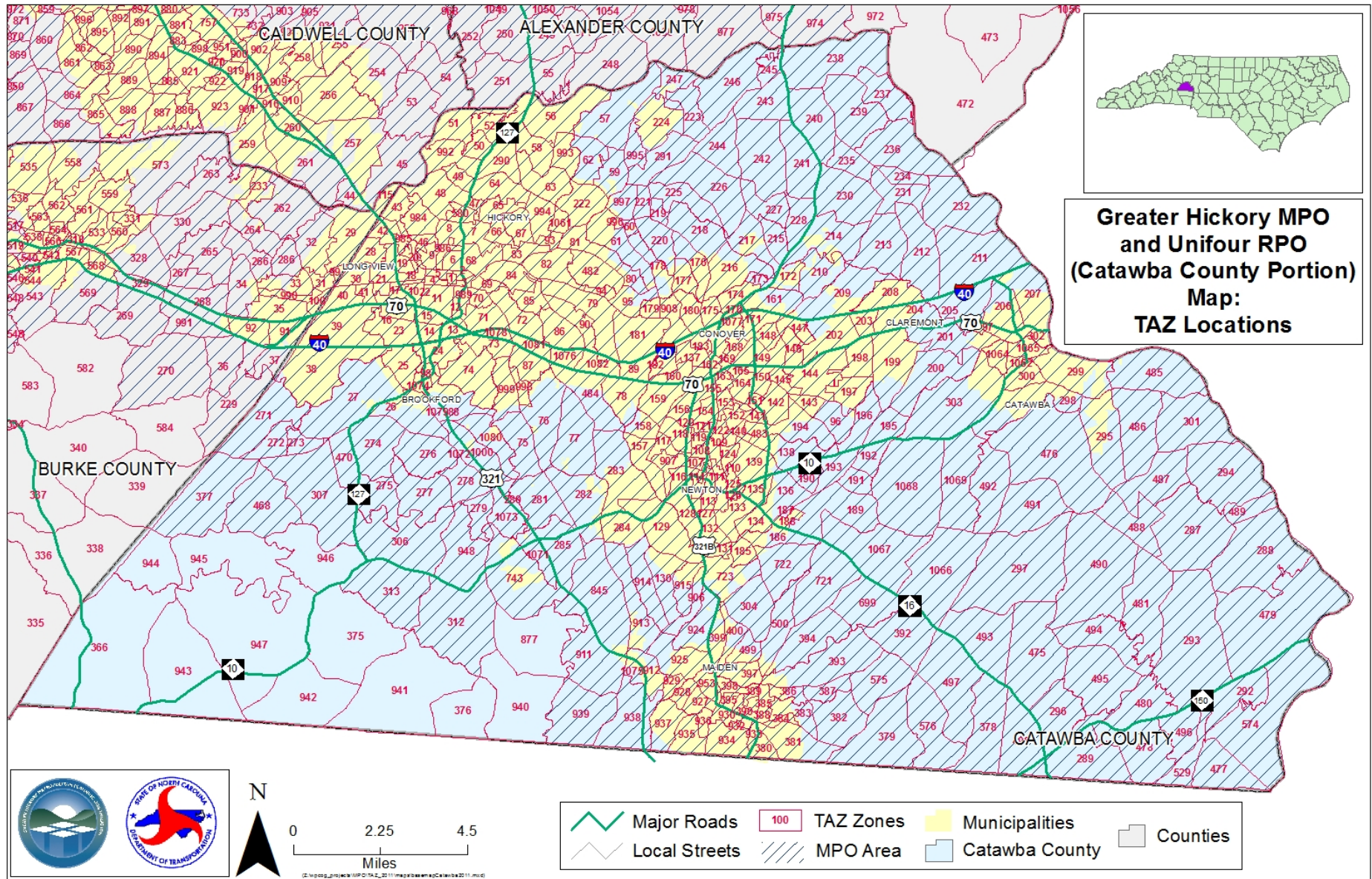


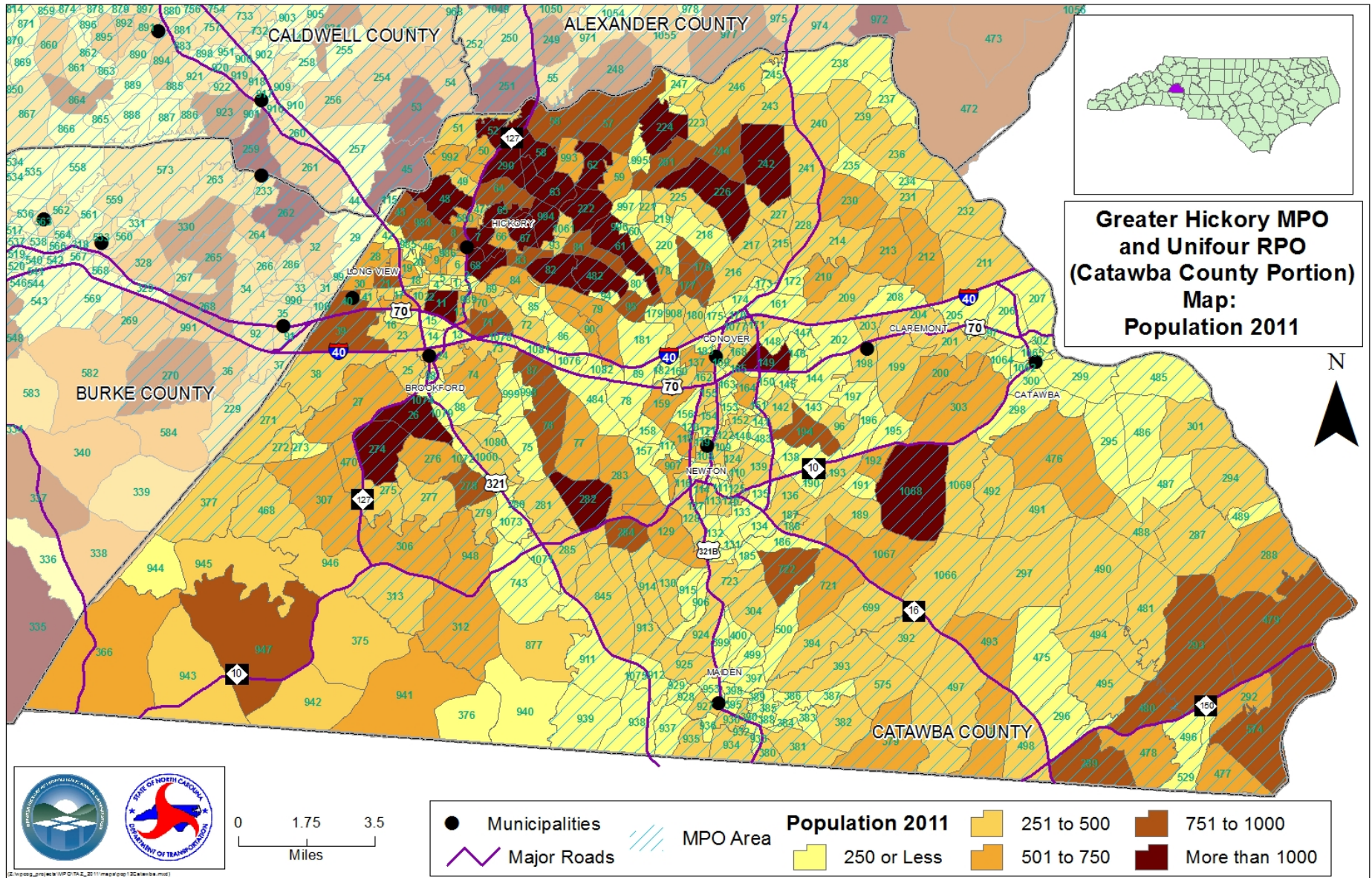
- Municipalities
- Major Roads
- ▨ MPO Area
- Employment 2040**
- 100 or Less
- 101 to 250
- 251 to 500
- 501 to 1000
- More than 1000

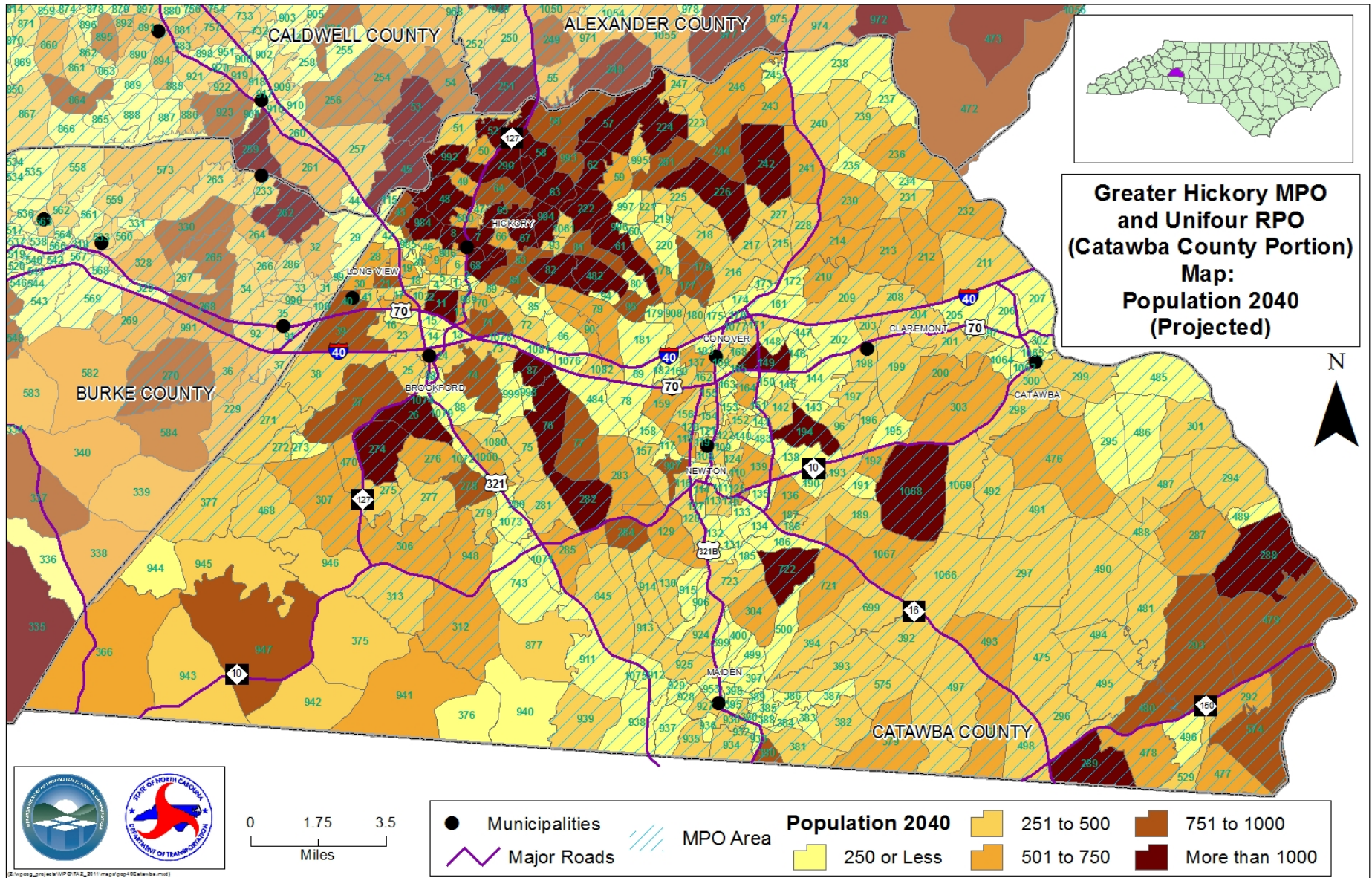


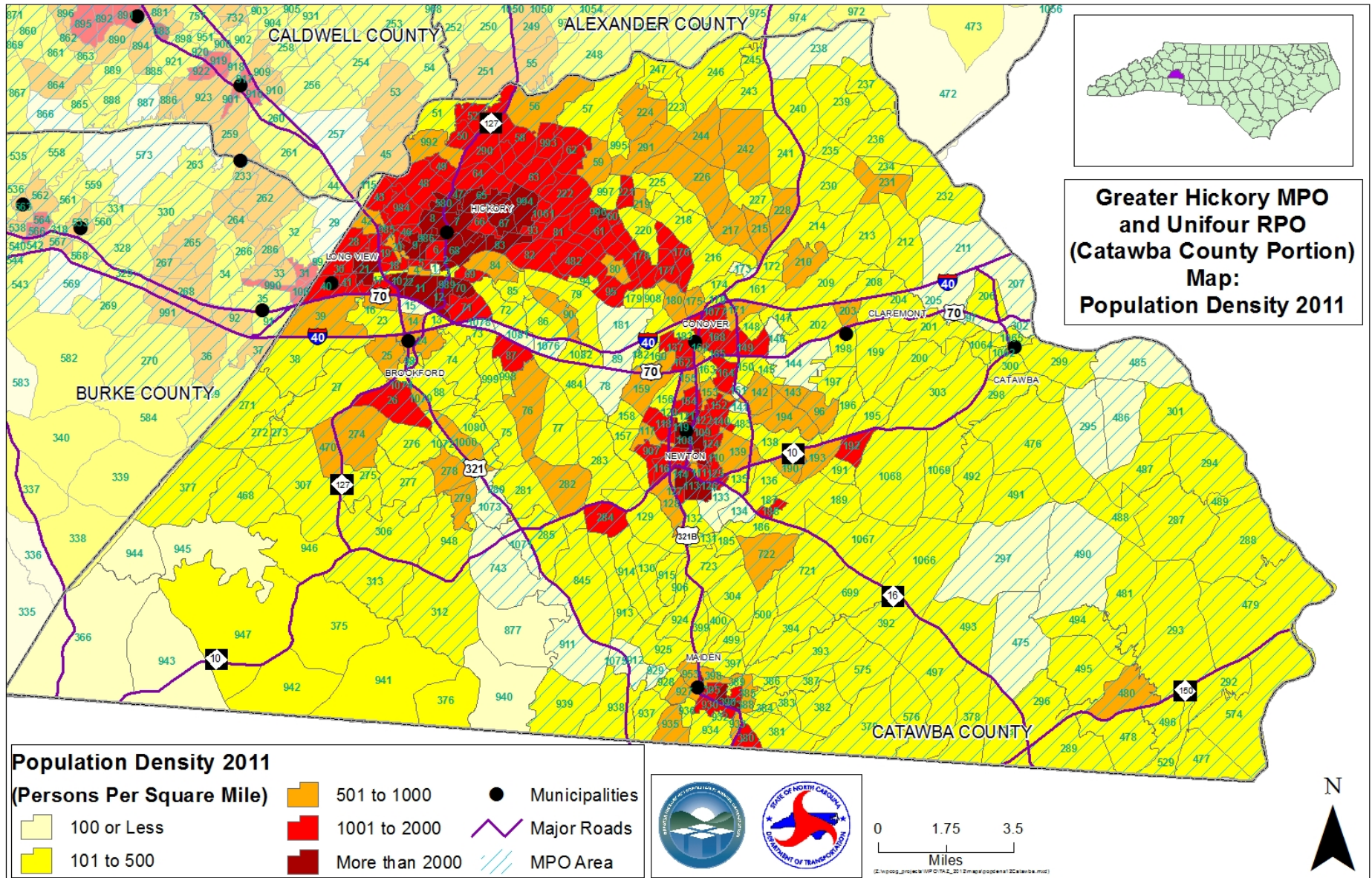
Catawba County Maps

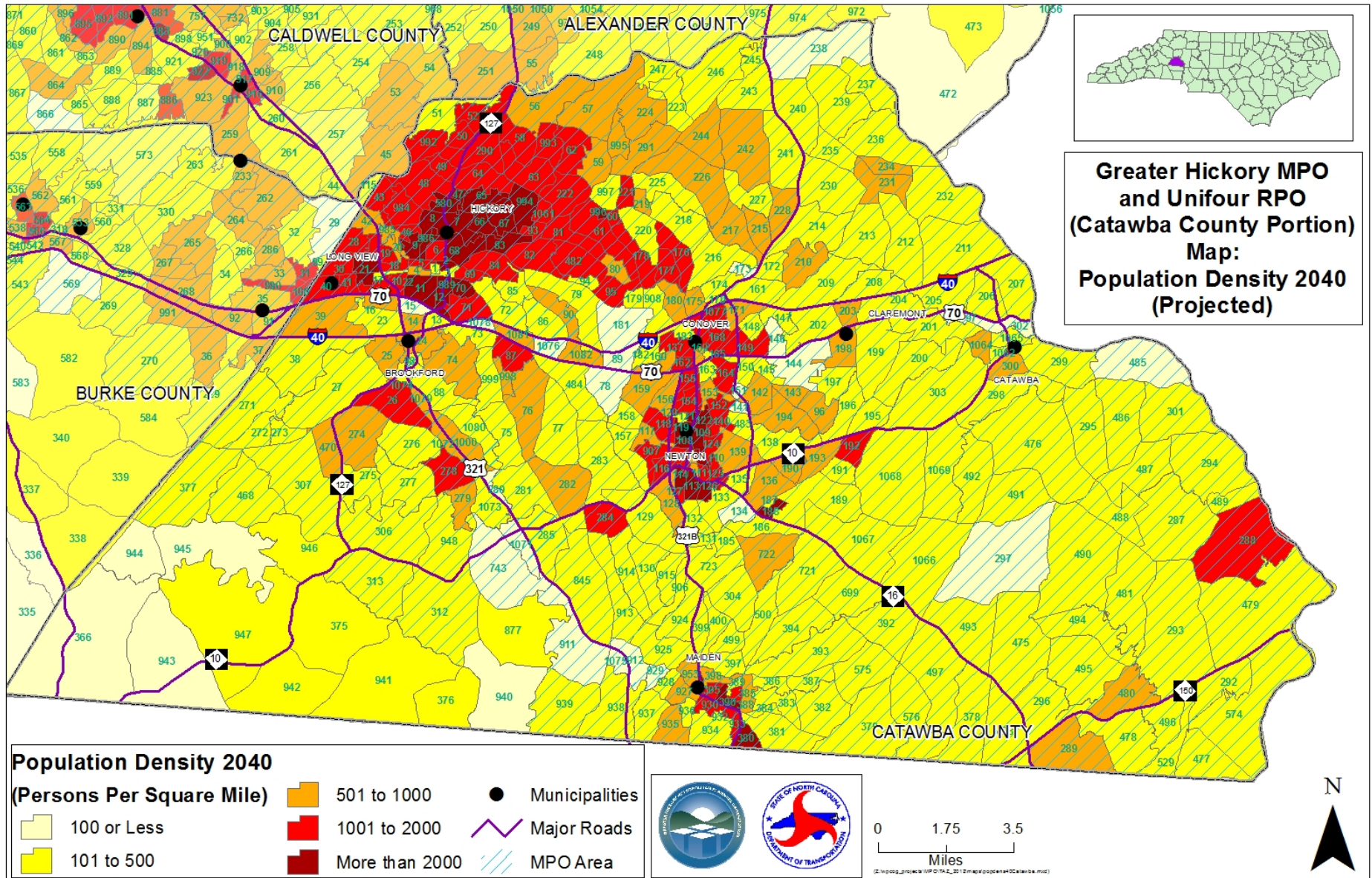


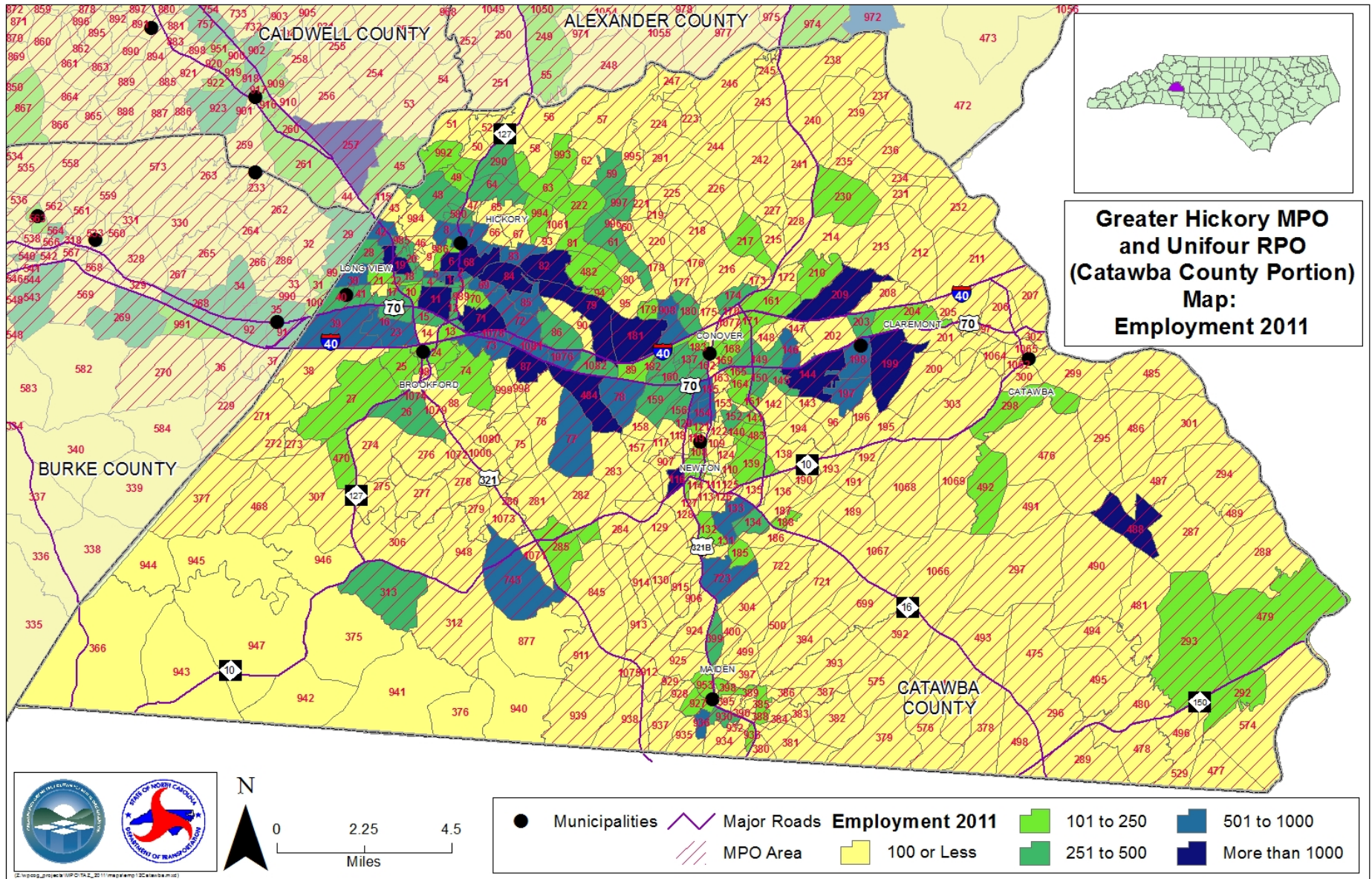


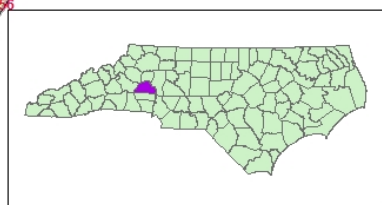
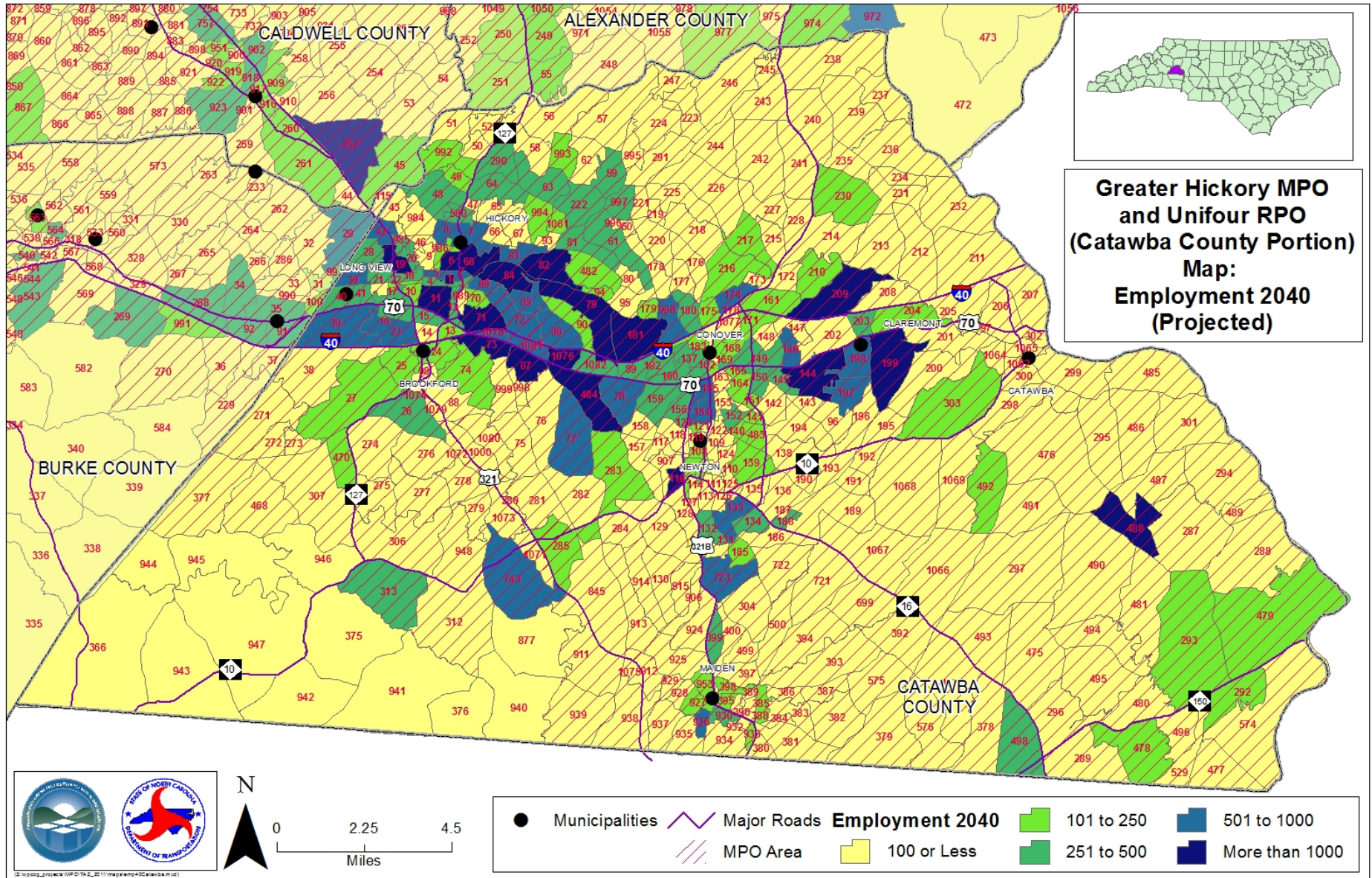




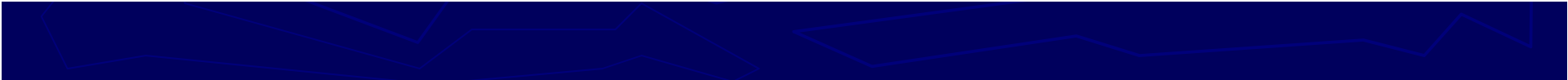








Greater Hickory MPO and Unifour RPO (Catawba County Portion) Map: Employment 2040 (Projected)



Traffic Analysis Zone (TAZ) Results

2011 Population and Housing Estimates

MPO or RPO	2011 Housing Units	2011 Households	2011 Population in Households	2011 Group Quarters Population	2011 Total Population
Greater Hickory MPO	133,226	119,449	294,387	6,493	301,330
Unifour RPO	30,218	25,916	64,780	1,395	66,175
Total	163,444	145,365	359,617	7,888	367,505

Traffic Analysis Zone (TAZ) Results

2040 Population and Housing Estimates

MPO or RPO	2040 Housing Units	2040 Households	2040 Population in Households	2040 Group Quarters Population	2040 Total Population
Greater Hickory MPO	145,272	131,495	325,575	7,026	332,601
Unifour RPO	32,302	28,000	70,019	1,684	71,703
Total	177,574	159,495	395,594	8,710	404,304

Traffic Analysis Zone (TAZ) Results

2011 and 2040 Population and Housing Counts

MPO or RPO	2011 Housing Units	2040 Housing Units	Housing Unit Chg. 2011-2040	% Housing Unit Chg. 2011-2040	2011 Total Pop.	2040 Total Pop.	Pop. Chg. 2011-2040	% Pop. Chg. 2011-2040
Greater Hickory MPO	133,226	145,272	12,046	9.0%	301,330	332,601	31,271	10.4%
Unifour RPO	30,218	32,302	2,084	6.5%	66,175	71,703	5,528	8.4%
Total	163,444	177,574	14,130	8.6%	367,505	404,304	36,799	10.0%

Traffic Analysis Zone (TAZ) Results

2011 Employment

MPO or RPO	2011 Industrial Employ.	2011 Retail Employ.	2011 Highway Retail Employ.	2011 Service Employ.	2011 Office Employ.	2011 Total Employ.
Greater Hickory MPO	44,990	22,822	11,268	41,876	11,614	132,570
Unifour RPO	2,709	1,087	631	3,732	1,137	9,296
Total	47,699	23,909	11,899	45,608	12,751	141,866

Traffic Analysis Zone (TAZ) Results

2040 Employment

MPO or RPO	2040 Industrial Employ.	2040 Retail Employ.	2040 Highway Retail Employ.	2040 Service Employ.	2040 Office Employ.	2040 Total Employ.
Greater Hickory MPO	52,205	26,585	12,604	47,217	12,076	150,687
Unifour RPO	3,435	1,206	645	3,871	1,298	10,455
Total	55,640	27,791	13,249	51,088	13,374	161,142

Traffic Analysis Zone (TAZ) Results

2011 and 2040 Employment Counts

MPO or RPO	2011 Total Employment	2040 Total Employment	Employment Change 2011-2040	Employment Change 2011-2040
Greater Hickory MPO	132,570	150,687	18,117	13.7%
Unifour RPO	9,296	10,455	1,159	12.4%
Total	141,866	161,142	19,276	13.6%